

CITY OF PORT LINCOLN

# **ANNUAL BUSINESS PLAN & BUDGET 2022/2023**



# CONTENTS

ii	Table of Contents
1	The Year Ahead
2	City Profile
4	Acknowledgement of Country
5	What We Achieved Last Year
6	Strategic Planning Framework
7	Strategic Directions Plan 2021 - 2030
8	Goal 1 – Economic Growth & Opportunity
10	Goal 2 – Liveable & Active Communities
12	Goal 3 – Governance & Leadership
14	Goal 4 – Sustainable Environment
16	Goal 5 – Community Assets & Placemaking
18	Capital Expenditure 2022/2023
20	How We Compare
22	Significant Influences
24	Financial Statements – Uniform Presentation of Finances
25	Financial Statements – Statement of Comprehensive Income
26	Financial Statements – Balance Sheet
27	Financial Statements – Statement of Cash Flows
28	Financial Statements – Changes in Equity
29	Funding the Business Plan
30	Financial Sustainability
32	Rating Policy and Arrangements
40	Long Term Financial Plan 2023-2032 - Financial Summary
44	Public Consultation

Prepared by **City of Port Lincoln**

Version 4

Adopted by Council

27 June 2022

RM: FINAL2210 18.80.1.6

Annual Business Plan and Budget Consultation

Period 19 May 2022 to 10 June 2022

Submissions heard on 30 May 2022

Front Cover image: Courtesy of Take 2 Photography

# THE YEAR AHEAD



It is my pleasure as Mayor to present this optimistic, vibrant and strong Annual Business Plan and Budget for the 2022/2023 financial year which commits to making significant progress towards delivering the 10 year strategic actions defined in Council's Strategic Directions Plan 2021 – 2030.

Our team has worked incredibly hard to ensure that we have a balanced approach to new initiatives, program and project delivery while considering external factors which have increased operating costs and working to minimise the impact on our community and ratepayers where possible.

On this basis, we are committed to delivering a schedule of works which only requires a total rate revenue increase of 4.4%, which is below current CPI. The actual impact on individual ratepayers will generally be less than this figure.

In 2021/2022 works commenced on the \$7.28M foreshore project which will see the creation of a new regionally significant adventure play space, vital upgrades to the town jetty, seawall, Parnkalla Trail and other enhancements along the foreshore. This major project will continue throughout the coming year.

We will also finalise some important community planning activities which are in progress including the development of an Economic Development & Investment Attraction Strategy, a Sport & Recreation Strategy, Waste Management Strategy and a Coastal and Marine Facilities Strategy.

Works will also commence on developing masterplans for Centenary Oval, the Ravendale Sports Complex and Murray's Point to understand future land use requirements, opportunities and potential investment requirements and partners.

We are also excited to be working in partnership with Uni Hub Spencer Gulf, which will see the former 'manse' building on the corner of Hallett Place and Adelaide Place be refurbished with \$200K of funding from Council (matched with a further \$200K of federal funding). This project will then see the launch and operation of a Uni Hub here in Port Lincoln from February 2023, which

is a big win for our community.

Other major community infrastructure works to be undertaken in 2022/2023 will include the refurbishment of ArtEyrea which has commenced, \$800K towards road resealing works, \$760K towards stormwater projects, \$450K towards footpaths, \$250K towards Nelson Square improvements and \$150K towards a dog park and \$450K to replace methane flares at the Resource Recovery Centre.

There will also be a focus on jobs and opportunities within Council in the coming year, as we create four new traineeship placements for locals across council operations as well as an additional two full time equivalent roles. These roles will span the areas of open spaces, civil operations, customer services, innovation and technology.

There will be investment in systems, technology, plant, equipment and business processes as we look to modernise and provide our workforce with the tools that they need to continue to improve the way we do business and improve the provision of services to the community.

A large investment is being made into refurbishing the Council Depot, including addressing non-compliances at the site, replacing end of life infrastructure and creating new office space and facilities. This will position Council to relinquish leased office space on Tasman Terrace and consolidate the infrastructure and environment teams at the depot.

We look forward to the year ahead, as we emerge from COVID with optimism, and will continue to build stronger ties and partnerships with local businesses and organisations along the way.

**Brad Flaherty**  
Mayor



# CITY PROFILE

Port Lincoln is the 'Seafood Capital of Australia', an iconic South Australian regional coastal city. We are the major service centre for the southern Eyre Peninsula communities.

The city is located at the base of Eyre Peninsula some 650km west of Adelaide by road, on one of the world's largest protected harbours. The natural setting of Boston Bay is a defining feature of Port Lincoln, with the foreshore open space a highly valued recreation space and visitor experience.

Regional primary production including 50% of South Australia's wheat, barley and oil seed, together with our deep natural harbour and commercial fishing fleet, makes Port Lincoln a major agricultural export and fishing centre.

The economy continues to diversify through the innovation and growth of production and industry, bringing new investment, workforce and population growth.

Port Lincoln is also a popular visitor destination, enhanced by a growing program of cruise ships visits (pre-COVID). Numerous festivals and events contribute to the city's vitality and attraction, including Tunarama, Adelaide to Port Lincoln Yacht Club Race, SALT Festival, Teakle Autosprint and Mortlock Shield Football Carnival.

**8 August  
1921**

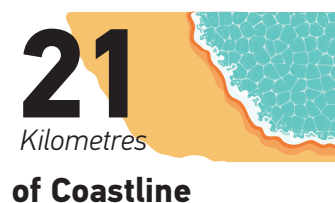
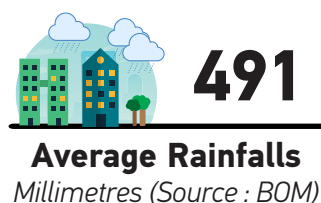
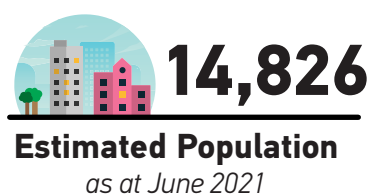
*Town Corporation  
Claimed*

**30 January  
1971**

*Proclaimed  
City*

**26 March  
1981**

*Boundaries  
Extended*





### Site Value Rateable Properties

as at June 2022

**\$1.081 Billion**

**8,821 Assessments**  
(8,544 Rateable)



### 240 Applications

2020/2021

**\$42 Million**

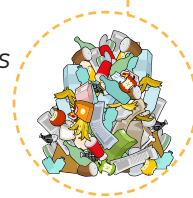
Value of Development Approvals



**\$100m** **257,000** Visitors to Port Lincoln in 2019

**10,978**

Tonnes of rubbish goes to landfill per year

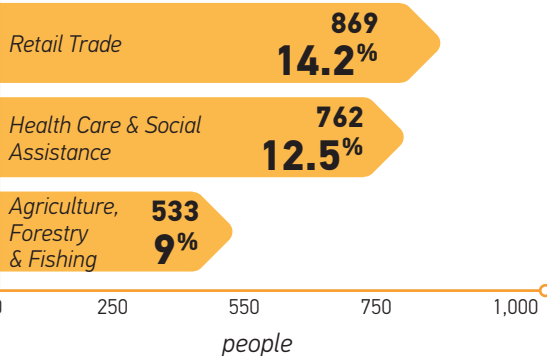


**2,035**

Tonnes recycled per year

### 3 Most Common

#### Employment Sector



**6.4%**

Unemployment Rate



**25.9%**

**2,939** People Volunteer

**2016**

**5.1%**

of the population are Aboriginal and/or Torres Strait islander people

**40 years**

median age (Regional SA is 45)

**40.7%**

of people have an education qualification

**29.6%**

young people are disengaged or partially disengaged 15 - 24 years

**6.1%**

people needing assistance (857)

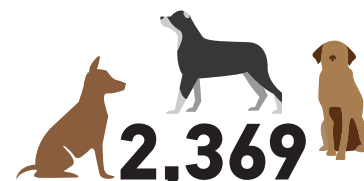
**Household Income**

11.2% earn >\$2,500 p/w  
24.2% earn <\$650 p/w



**71.5%**

of Households have Internet



**2,369**

People own dogs

Source:

[https://profile.id.com.au/s\\_port-lincoln-lga](https://profile.id.com.au/s_port-lincoln-lga)

<https://www.tra.gov.au/Regional/local-government-area-profiles>

# ACKNOWLEDGEMENT OF COUNTRY

We acknowledge the Barngarla People, the Traditional Owners of the land on which the City of Port Lincoln rests and their continuing connection to land, sea, culture and community. We pay our respects to Elders past, present and emerging, and we extend that respect to other Aboriginal and Torres Strait Islander people in our community.





# WHAT WE ACHIEVED LAST YEAR

Council is not immune to the global impacts of COVID, and in more recent times the war in Ukraine which has impacted on the cost of just about everything, along with labour and skilled worker shortages which are being experienced by businesses across the country.

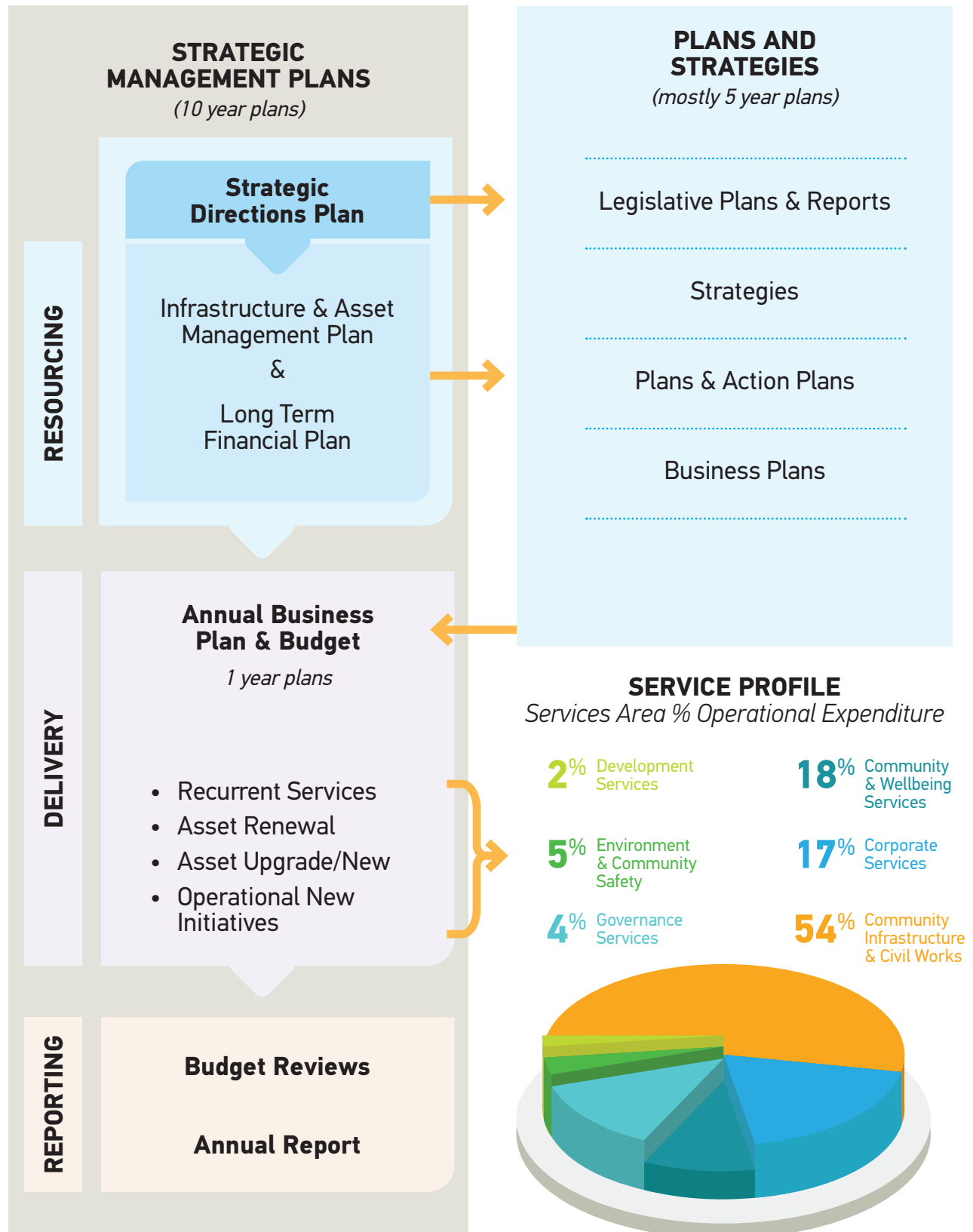
Despite these challenges, which have led directly to delays with projects and initiatives as well as underlying cost increases for the provision of services and projects, Council has still completed a number of projects and made good progress on others.

Some of the key projects and initiatives since July 2021 are:

- Commenced Foreshore Redevelopment
- Finalised the Open Space Strategy
- Secured funding and finalised plan for Whait Reserve Upgrades
- Replaced playground equipment at Harbour View Reserve and Flinders Park
- Resolved safety concerns at Train Playground
- Completed installation of ambulant toilet facility at Puckridge Park
- Replaced lighting towers at Ravensdale Sports Complex
- Commenced 'school safety focus' program with Way2Go
- Secured funding support and approval for Koala crossing on Oxford Terrace
- Completed footpath and enhancements along Stamford Terrace
- Completed \$1.4M road reseal program
- Completed \$500K footpath program (new and replacement)
- Completed installation of memorial tree at North Shields Cemetery
- Completed installation of ticket booth at Centenary Oval
- Completed installation of fire escape and HVAC at Nautilus Arts Centre
- Completed refurbishment of upstairs office area at Nautilus Arts Centre
- Completed 'red shed' project to create new 'welcome' experience for cruise ship visitors
- Tendered for upgrade works at ArtEyrea
- Hosted Visitor Information Centre Network Conference in Port Lincoln
- Supported successful application for Uni Hub Spencer Gulf to create a Port Lincoln Uni Hub
- And more.



# STRATEGIC PLANNING FRAMEWORK





# STRATEGIC DIRECTIONS PLAN 2021 - 2030

The Strategic Directions Plan Vision is a long term aspiration describing the future place and community of Port Lincoln. The Vision has been developed and confirmed through community engagement. The implementation of the Strategic Directions Plan will lead the city towards our Vision.



## VISION

"An inclusive and connected community committed to excellence in lifestyle, culture, industry and innovation"



## MISSION

Council will work for and with the community to achieve the Vision by:

- Engaging and empowering the community
- Providing best value and timely services and infrastructure
- Creating a safe and inclusive place to live, work and visit
- Improving environmental sustainability.



## VALUES

- UNITY & COLLABORATION
- RESPONSIBILITY & INTEGRITY
- INCLUSIVITY & RESPECT
- RESPONSIVENESS & PROGRESSIVENESS
- SAFETY



# GOAL 1

## ECONOMIC GROWTH AND OPPORTUNITY

We will be an innovative, diverse and growing local economy

### WHAT WE AIM TO FOCUS ON AND ACHIEVE BY 2030

#### Our Key Focus Areas

- Southern Eyre Peninsula's commercial, health, education and community regional hub
- Productive agriculture, fishing and aquaculture sectors
- Quality tourism and visitor experiences
- Long term job creation, investment growth and partnership opportunities
- Infrastructure supporting growth and import and export viability
- New, sustainable industries based on a clean environment and quality natural resources
- Innovative, entrepreneurial, globally connected businesses

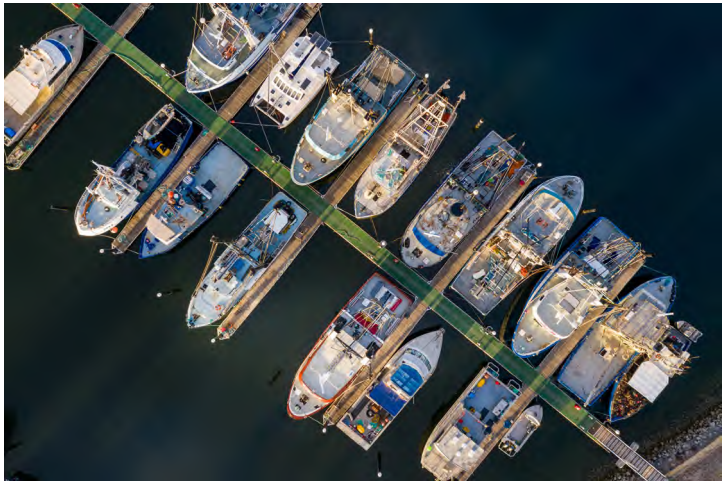
#### Measuring Our Success

- Tourism activity
- Progress of Strategic Actions that support Economic Growth and Opportunity
- Progress of Annual Business Plan projects supporting Economic Growth and Opportunity
- Development Application Trend Data - number, type and dollar value of applications

#### Our Strategic Actions

- 1.1 Advocate for greater education pathways and linkages between schools, educational institutions and local industry and investigate regional university and study hub options
- 1.2 Investigate and implement policies to facilitate and enable diversity of economic development and investment activities
- 1.3 Confirm Port Lincoln's strategic economic priorities and advocate and partner in actions to promote the city's economic vitality through the EPLGA's Eyre Peninsula Strategic Plan
- 1.4 Work with RDA EP and other economic facilitators to advocate for economic growth initiatives in the region for existing and emerging industries, technology and production
- 1.5 Resolve sustainable long-term arrangements for infrastructure and activities at the Port Lincoln Marina Precinct to meet future commercial, tourism and recreational needs
- 1.6 Enable and streamline business development, innovation and growth
- 1.7 Advocate for and facilitate improvements to communication and information technology infrastructure





### New Projects & Initiatives for 2022/2023

Project Name	Description	Expenditure \$'000s	Grants/ Contributions \$'000s
Economic Development Strategy Implementation	Implementation of year 1 actions	40	





## GOAL 2

### LIVEABLE AND ACTIVE COMMUNITIES

We will be a healthy, safe, inclusive and empowered community

#### WHAT WE AIM TO FOCUS ON AND ACHIEVE BY 2030

##### Our Key Focus Areas

- Community and individual physical and mental health and well-being
- Community safety and liveability
- Empowered, inclusive, connected, diverse and resilient community
- Opportunity for children and young people to reach their potential, older people to be valued and all people to participate fully
- A regional centre for arts, culture and local heritage

##### Measuring Our Success

- Community safety
- Use and management of public and open spaces
- Library, Nautilus Arts Centre and Port Lincoln Leisure Centre activity
- Progress of the Strategic Actions that support Liveable and Active Communities
- Progress of Annual Business Plan projects supporting Liveable and Active Communities

##### Our Strategic Actions

- 2.1 Advocate for continued investment and expansion of Health and Aged Care Services including regional offerings
- 2.2 Develop and implement a Sports and Recreation Strategy
- 2.3 Support & collaborate in programs that benefit all diversity groups in our community
- 2.4 Develop and implement a Disability Access and Inclusion Plan
- 2.5 Investigate and implement improvements to community safety
- 2.6 Advocate for and support affordable low cost accommodation and housing diversity
- 2.7 Complete and implement a Reconciliation Action Plan with the Barngarla Native Title holders and wider Aboriginal community
- 2.8 Develop a Youth Action Plan
- 2.9 Develop and implement a Volunteer Management Plan
- 2.10 Develop and implement a Community Events Strategy
- 2.11 Develop and implement an Arts and Culture Strategy





### New Projects & Initiatives for 2022/2023

Project Name	Description	Expenditure \$'000s	Grants/ Contributions \$'000s
Art & Cultural Facilitation	Partnership with Country Arts SA to engage an arts and cultural facilitator in Port Lincoln to develop local frameworks and programs. (Year 2 of program)	140	70
Volunteer Management Plan	Development & implementation of a Volunteer Management Plan	resourced internally	
Animal Management Plan	Development of Animal Management Plan	resourced internally	





## GOAL 3

### GOVERNANCE AND LEADERSHIP

We will be strategically driven, community aware and accountable

#### WHAT WE AIM TO FOCUS ON AND ACHIEVE BY 2030

##### Our Key Focus Areas

- Customer-centric service delivery
- Local and regional community leadership
- Strategic focus, effective and accountable decisions, responsive to significant events
- Open, effective and productive community and stakeholder engagement
- Sustainable long term financial position

##### Measuring Our Success

- Completion of Annual Business Plan projects
- Long Term Financial Plan and Budget performance
- Grant and partnership funding
- Community engagement with Council
- Progress of the Strategic Actions that support Governance and Leadership
- Progress of Annual Business Plan projects supporting Governance and Leadership
- Progress of Council's strategies and plans

##### Our Strategic Actions

- 3.1 Implement workforce strategies to attract, develop and retain qualified and experienced staff
- 3.2 Lead regional discussion on local government reform to effectively and efficiently meet community needs in Southern Eyre Peninsula
- 3.3 Advocate for regional co-operation and promote the voice of the community in regional, state and national forums
- 3.4 Develop and implement an Emergency Management Plan, business continuity and related capabilities
- 3.5 Implement Business Excellence and continuous improvement, including service reviews for relevance, efficiency and effectiveness
- 3.6 Develop a strategic response to population growth and service demand from the communities of interest in District Council of Lower Eyre Peninsula adjacent City of Port Lincoln
- 3.7 Monitor and respond to policy directions in Commonwealth/State funding programs relating to the COVID-19 virus
- 3.8 Maximise Council and community grant funding and partnership opportunities to achieve outcomes for the Port Lincoln community to strengthen our financial capacity
- 3.9 Investigate and implement collaborative and resource sharing opportunities with adjoining councils and government agencies





## New Projects & Initiatives for 2022/2023

Project Name	Description	Expenditure \$'000s	Grants/ Contributions \$'000s
<b>Enterprise Software</b>	Implement Enterprise Software solution to replace current Corporate System	321	
<b>GIS</b>	Implementation of Geographical Information System	24	
<b>ESCOSA Rates Oversight Scheme</b>	Mandated ESCOSA Review - costs payable to ESCOSA	52	
<b>Infrastructure Revaluations</b>	Legislative revaluation of roads, footpaths and kerbs infrastructure	50	
<b>Council Elections</b>	2022 Council Election - costs payable to Electoral Commission	75	
<b>Emergency Management Plan</b>	Develop an Emergency Management Plan	20	
<b>Asset Maturity Assessment</b>	Asset Management Improvement Program	10	





## GOAL 4

### SUSTAINABLE ENVIRONMENT

We will be clean, green, renewable and resilient

#### WHAT WE AIM TO FOCUS ON AND ACHIEVE BY 2030

##### Our Key Focus Areas

- Healthy natural environment, waterways, land biodiversity and coast
- Pristine protected coastal environment
- Environmental responsibility and sustainability
- Climate change resilience and adaptation

##### Measuring Our Success

- Recyclable waste ratio
- Environmental sustainability actions in the community
- Investment in stormwater infrastructure and management
- Recycled Water Scheme performance
- Progress of the Strategic Actions that support Sustainable Environment
- Progress of Annual Business Plan projects supporting Sustainable Environment

##### Our Strategic Actions

- 4.1 Improve stormwater management for safety, business, property protection and environmental outcomes, including water sensitive urban design
- 4.2 Integrate environmental impacts into consideration of service provision and project planning
- 4.3 Work in partnership with local business, Eyre Peninsula Landscape Board, the community and other partners to promote and implement environmental sustainability initiatives
- 4.4 Support and implement renewable energy, energy efficiency, emissions reduction and community sustainability initiatives
- 4.5 Develop and implement a Waste Management Strategy, including community empowerment and education on resource management
- 4.6 Support initiatives through the Regional Climate Change Adaptation Plan for Eyre Peninsula and other coastal and environmental alliances
- 4.7 Develop and implement a Carbon Management Plan





## New Projects & Initiatives for 2022/2023

Project Name	Description	Expenditure \$'000s	Grants/ Contributions \$'000s
<b>Carbon Management Plan</b>	Review Council's carbon footprint and develop an action plan.	<b>resourced internally</b>	





## GOAL 5

### COMMUNITY ASSETS AND PLACEMAKING

We will be a welcoming, liveable and accessible City

#### WHAT WE AIM TO FOCUS ON AND ACHIEVE BY 2030

##### Our Key Focus Areas

- Public places and infrastructure meeting economic and community needs
- Community facilities and open spaces for recreation, leisure and health and well-being
- Foreshore, CBD and Marina Precincts public realm activation
- Safe, inclusive and sustainable public places and Council facilities
- Local and regional accessibility and connectivity

##### Measuring Our Success

- Community assets satisfaction
- Asset renewal ratio
- Total length of paths and trails
- Placemaking capital investment
- Progress of the Strategic Actions that support Community Assets and Placemaking
- Progress of Annual Business Plan projects supporting Community Assets and Placemaking

##### Our Strategic Actions

- 5.1 Develop and implement a Footpaths and Trails Strategy
- 5.2 Develop and implement a Trails and Wayfinding Strategy including future development options for the Parnkalla Trail
- 5.3 Complete and implement the Open Space Strategy
- 5.4 Deliver key elements of CBD, Foreshore and Marina Precincts Master Plan
- 5.5 Progress development of a civic and community hub
- 5.6 Investigate options for neighbourhood renewal projects in appropriate precincts of the city
- 5.7 Develop a Road Traffic Management Place including shared and future alternative uses of rail and road corridors.





## New Projects & Initiatives for 2022/2023

Project Name	Description	Expenditure \$'000s	Grants/ Contributions \$'000s
Masterplanning	Commence masterplanning for Murray's Point, Centenary Oval & Ravendale Oval	45	
Create Infrastructure Development Guidelines	Guidelines for new developments in Port Lincoln	15	
Liverpool Street Pump Station	Decommission and remove Liverpool Street Pump Station	25	

# CAPITAL EXPENDITURE

## 2022/2023

Project Name	Project Scope	Renewal (\$)	New / Upgrade (\$)	Funding (\$)
<b>BUILDINGS</b>				
Nautilus Arts Centre First Floor Office completion	Nautilus Arts Centre First Floor Office Air Conditioner		10,000	-
Manse Redevelopment	Manse Upgrade for Port Lincoln Uni Hub		400,000	200,000
Depot Upgrade	Upgrade and redevelopment of Council Depot		2,350,000	
Sub Total			2,760,000	200,000
<b>DRAINAGE</b>				
Stormwater Infrastructure	Continued implementation of Stormwater Management Plan		510,000	-
Additional Stormwater Projects	Stormwater projects in addition to the Stormwater Management Plan		250,000	-
Sub Total			760,000	-
<b>FOOTPATHS</b>				
New Footpaths Program	New Footpath upgrades		200,000	-
Footpath & Kerb Renewal Program	Footpath & Kerb Renewal Program	250,000		212,000
Sub Total		250,000	200,000	212,000
<b>FURNITURE &amp; FITTINGS</b>				
Elected Member IT Equipment	Electronic devices for Elected Members following Council elections		15,000	-
Library Public PC Replacement	Replacement of suite of 4 public access computers including software	10,000		-
Library Self-Serve Kiosks	Replacement of 2 x self-serve kiosks with updated software	25,000		-
Nautilus Arts Centre Front of House Sound System	Replacement of the Nautilus Arts Centre Front of House Sound System	80,000		-
Nautilus Arts Centre Lighting Upgrade	Nautilus Arts Centre Lighting Upgrades	60,000		-
Council Telephone System	Replace current outdated telephone system and hardware to a modern cloud based system and handsets	40,000		-
Sub Total		215,000	15,000	-



## Capital Expenditure 2022/2023 – continued

Project Name	Project Scope	Renewal (\$)	New / Upgrade (\$)	Funding (\$)
<b>KERBS</b>				
Milton Avenue	Milton Avenue Kerbing to address drainage issues		20,000	-
Stamford Terrace/ Windsor Avenue Kerbing	Complete kerb works and intersection drainage issues		60,000	-
Sub Total			80,000	-
<b>PORT LINCOLN LEISURE CENTRE (PLLC)</b>				
Storage Doors - PLLC	Supply and installation of fabricated plywood doors for storage		6,000	-
Basketball Backboards - PLLC	Replace basketball backboards in "old" stadium	30,000		-
Sub Total		30,000	6,000	-
<b>OTHER COMMUNITY ASSETS</b>				
Foreshore Redevelopment (Ongoing)	Ongoing Foreshore Redevelopment as per funding agreement		3,600,000	2,200,000
Rainbird Irrigation	Installation of Rainbird Irrigation to Wellington Square, Shaen Street, Dickens Street & Kirton Point Oval		6,000	-
Poole Oval	Irrigation Design		6,000	-
Nelson Square Enhancements	Nelson Square Enhancements		250,000	250,000
Dog Park	Development of Dog Park		150,000	150,000
Entry Signage	Signage for Council entrances - Tulka, Western Approach Road and Flinders Highway		15,000	-
Playground WHS Improvement Program	Attend to various playground WHS safety findings	100,000		-
CBD Precinct Plan (c/fwd)	Traffic engineering, project documentation		50,000	
CBD Access & Parking Action Plan (c/fwd)	Implementation of Priority Actions pending adoption		40,000	
Sub Total		100,000	4,117,000	2,600,000
<b>PLANT &amp; EQUIPMENT</b>				
Fleet Vehicles (x3) including trade-in	Motor Vehicle Replacements (1 new & 2 replacements)	68,000	45,000	16,000
Plant Purchase and Disposal	Purchase Skidsteer, Grader and Steel Drum Roller to be sold		200,000	100,000
Footpath Sweeper	Purchase Footpath Sweeper		50,000	-
Pressure Cleaner	Purchase of High Pressure Water Cleaner for Depot		20,000	-
Parks and Gardens Truck	Depot Truck		75,000	-

## Capital Expenditure 2022/2023 – continued

Project Name	Project Scope	Renewal (\$)	New / Upgrade (\$)	Funding (\$)
Construction Truck	Replace Mitsubishi Fuso Canter FE Tipper	100,000		20,000
Depot Operations Utes	Replace Parks & Gardens & Construction Utes	66,000		20,000
Supervisor Utes	Replace Parks & Gardens & Construction Supervisor Utes	76,000		20,000
Community Safety Vehicle	Replace Community Safety Vehicle	38,000		10,000
Line Marker	Replace Line Marker	25,000		-
<b>Sub Total</b>		<b>373,000</b>	<b>390,000</b>	<b>186,000</b>
<b>RECYCLED WATER SCHEME</b>				
Filtration - Valve Actuators	Filtration - Replace 28 x Valve Actuators	13,500		-
<b>Sub Total</b>		<b>13,500</b>		<b>-</b>
<b>RESOURCE RECOVERY CENTRE</b>				
Resource Recovery Centre Flare	Resource Recovery Centre Flare	450,000		-
Resource Recovery Centre - Line Cell 4	Line Section of Cell 4 to extend life		200,000	
<b>Sub Total</b>		<b>450,000</b>	<b>200,000</b>	<b>-</b>
<b>ROADS</b>				
Road Reseal Program	Annual Resealing Program TBC	800,000		-
<b>Sub Total</b>		<b>800,000</b>		<b>-</b>

# HOW WE COMPARE



Each year when we prepare the Annual Business Plan and Budget we undertake analysis of some key metrics against the other Councils which are classified as regional cities by the Local Government Grants Commission.

Although we are comparing our draft budget with other council's previous years data (so there is a 12 month gap), this still provides us with a good indication of how we compare in basic terms.

These comparisons provide us with context on resourcing levels compared to other regional cities in South Australia.

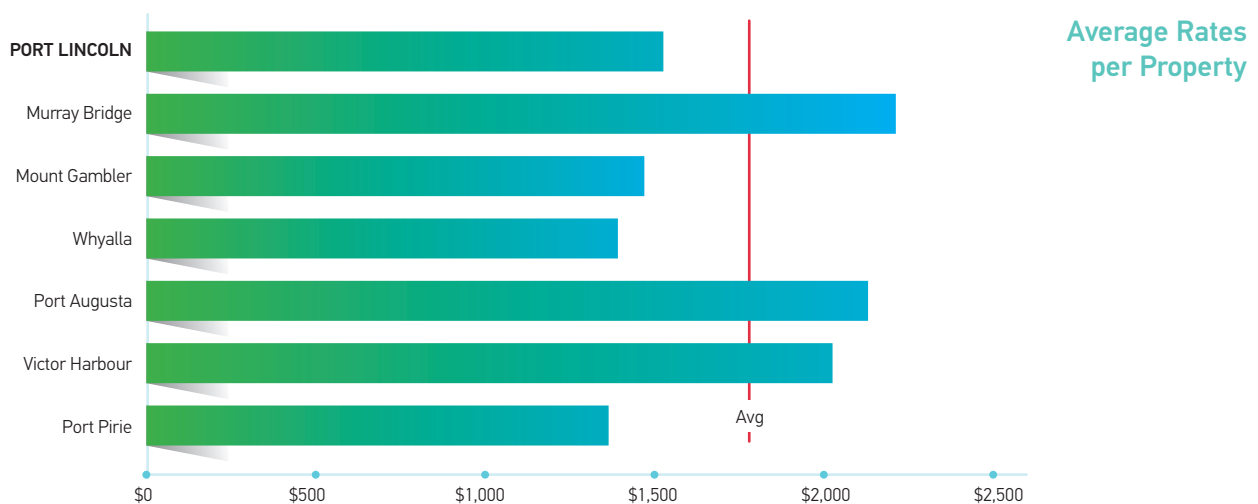
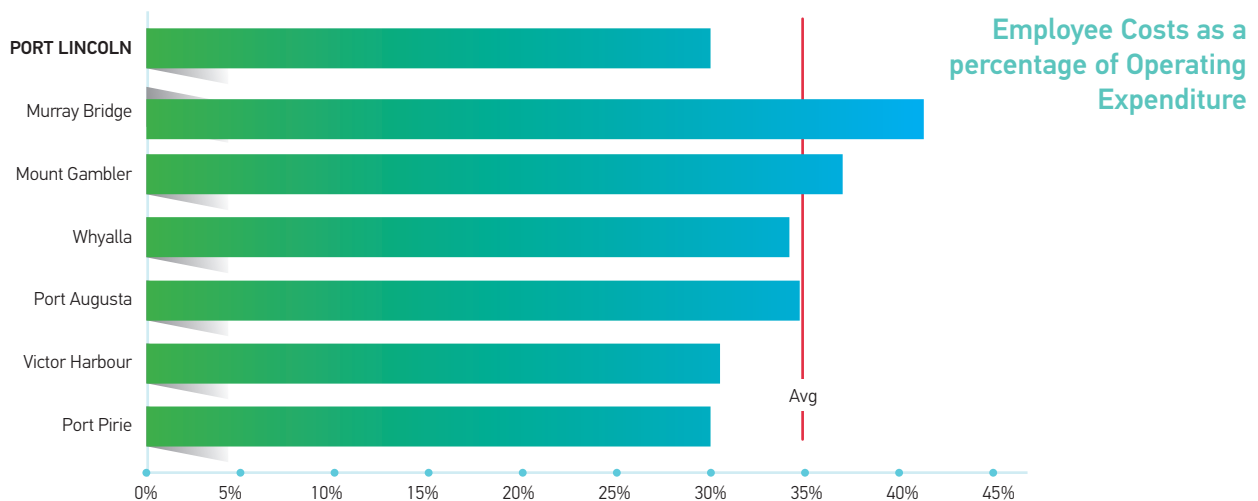
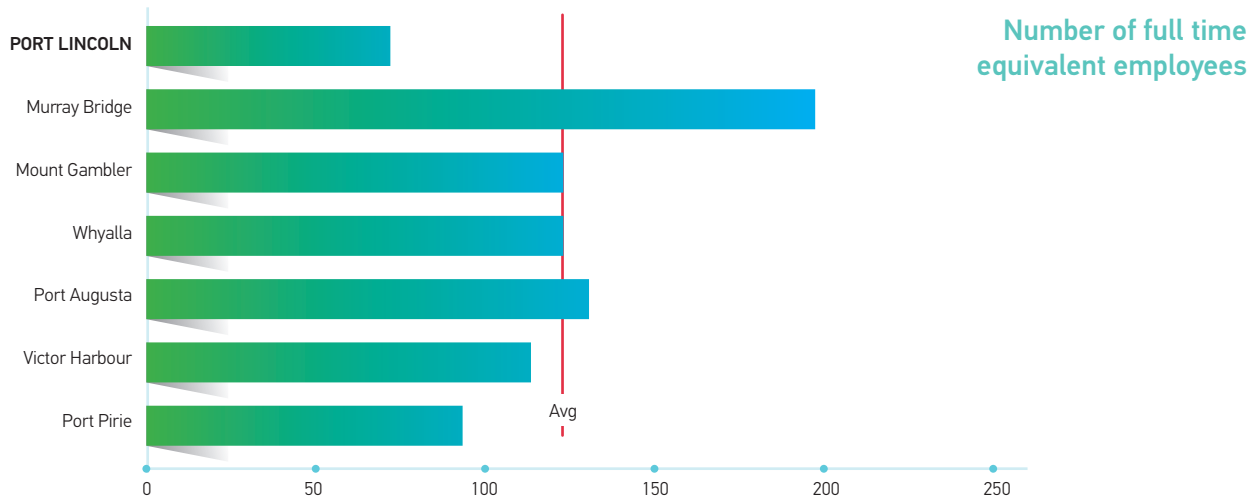
Further comparison is available at:

[councilsinfocus.sa.gov.au](https://councilsinfocus.sa.gov.au)





## HOW WE COMPARE



# SIGNIFICANT INFLUENCES

A number of significant factors have influenced the preparation of the Council's 2022/2023 Annual Business Plan.

## These include:

- Consumer Price Index increases on existing goods and services including increases to regional memberships and subscriptions of around 5.1% (twelve months to March 2022)
- Requirements to maintain and improve infrastructure assets to acceptable standards, including roads, footpaths, stormwater drainage and other community assets
- Planning service delivery needs for a increasing population (0.5% growth)
- Diminishing State / Commonwealth grant funding for standard operating activities in the longer term
- Increased success with obtaining State / Commonwealth grant funding for capital / infrastructure projects
- Need to deliver new initiatives as per the Strategic Directions Plan 2021 - 2030

At a minimum, Council revenue needs to keep pace with these underlying cost indices, simply to continue delivering current services, renewal programs and a modest level of new project and initiative capacity in order to deliver on the long term plans for the community.









# FINANCIAL STATEMENTS

## UNIFORM PRESENTATION OF FINANCES FOR THE YEAR ENDED 30TH JUNE 2023 Annual Budget 2022/2023

	Annual Budget 2021/2022 \$	Budget Forecast #3 2021/2022 \$	Annual Budget 2022/2023 \$
Income	22,459,537	22,390,240	23,706,160
Expenses	(22,696,394)	(23,329,700)	(24,155,144)
Operating Surplus/(Deficit)	(236,857)	(939,460)	(448,984)
<b>Net Outlays on Existing Assets</b>			
Capital Expenditure on renewal and replacement of Existing Assets	(2,603,500)	(4,120,083)	(2,250,000)
Add back Depreciation, Amortisation & Impairment	4,164,103	4,168,659	4,171,149
Proceeds from Sale of Replaced Assets	45,500	45,500	186,000
	1,606,103	94,076	2,107,149
<b>Net Outlays on New and Upgraded Assets</b>			
Capital Expenditure on New and Upgraded Assets	(5,535,420)	(5,782,909)	(8,563,000)
Amounts received specifically for New and Upgraded Assets	1,281,020	1,513,930	3,042,000
	(4,254,400)	(4,268,979)	(5,521,000)
<b>Net Lending/(Borrowing) for Financial Year</b>			
	(2,885,154)	(5,114,363)	(3,862,835)



## STATEMENT OF COMPREHENSIVE INCOME

	Annual Budget 2021/2022 \$	Budget Forecast #3 2021/2022 \$	Annual Budget 2022/2023 \$
<b>INCOME</b>			
Rates	15,687,462	15,698,604	16,372,919
Statutory Charges	284,400	348,400	359,900
User Charges	2,572,706	2,440,472	2,711,201
Grants, Subsidies and Contributions	1,984,114	1,586,862	2,284,887
Investment Income	78,640	58,640	74,661
Reimbursements	902,902	1,050,661	834,561
Other Income	949,313	1,206,601	1,068,031
<b>Total Income</b>	<b>22,459,537</b>	<b>22,390,240</b>	<b>23,706,160</b>
<b>EXPENSES</b>			
Employee Costs	6,708,747	6,640,953	7,251,628
Materials, Contracts & Other Expenses	11,562,454	12,322,458	12,496,191
Finance Costs	261,090	197,630	236,176
Depreciation, Amort & Impairment	4,164,103	4,168,659	4,171,149
<b>Total Expenses</b>	<b>22,696,394</b>	<b>23,329,700</b>	<b>24,155,144</b>
<b>OPERATING SURPLUS / (DEFICIT)</b>	<b>(236,857)</b>	<b>(939,460)</b>	<b>(448,984)</b>
Amounts received specifically for new or upgraded assets	1,281,020	1,513,930	3,042,000
<b>TOTAL COMPREHENSIVE INCOME</b>	<b>1,044,163</b>	<b>574,470</b>	<b>2,593,016</b>

## BALANCE SHEET

	Annual Budget 2021/2022 \$	Budget Forecast #3 2021/2022 \$	Annual Budget 2022/2023 \$
<b>ASSETS</b>			
<b>Current Assets</b>			
Cash and Cash Equivalents	2,753,643	3,401,901	2,127,823
Trade and Other Receivables	1,701,161	1,547,928	1,547,928
Financial Assets	173,914	133,914	89,121
<b>Total Current Assets</b>	<b>4,628,718</b>	<b>5,083,743</b>	<b>3,764,872</b>
<b>Non-Current Assets</b>			
Financial Assets	488,017	568,017	570,168
Other Non-Current Assets	-	163,116	163,116
Infrastructure, Property, Plant & Equipment - Land	78,762,300	78,760,000	78,760,000
Buildings	25,805,522	25,762,995	27,799,429
Infrastructure	103,562,187	103,415,329	107,153,625
Plant and Equipment	1,060,941	1,038,529	1,385,511
Furniture and Fittings	226,458	164,570	337,769
Resource Recovery Centre	2,416,338	3,729,775	4,299,715
Leisure Centre	15,882,562	15,834,831	15,425,831
Right-of-Use Assets	736,284	810,337	810,337
<b>Total Non-Current Assets</b>	<b>228,940,609</b>	<b>230,247,499</b>	<b>236,705,501</b>
<b>Total Assets</b>	<b>233,569,327</b>	<b>235,331,242</b>	<b>240,470,373</b>
<b>LIABILITIES</b>			
<b>Current Liabilities</b>			
Trade and Other Payables	2,833,909	2,338,668	2,331,293
Borrowings	635,166	688,467	685,848
Provisions	921,321	969,811	969,811
<b>Total Current Liabilities</b>	<b>4,390,396</b>	<b>3,996,946</b>	<b>3,986,952</b>
<b>Non-Current Liabilities</b>			
Trade and Other Payables	-	14,637	14,637
Borrowings	8,008,460	8,130,194	10,686,303
Provisions	2,421,123	3,955,587	3,955,587
<b>Total Non-Current Liabilities</b>	<b>10,429,583</b>	<b>12,100,418</b>	<b>14,656,527</b>
<b>Total Liabilities</b>	<b>14,819,979</b>	<b>16,097,364</b>	<b>18,643,479</b>
<b>NET ASSETS</b>	<b>218,749,347</b>	<b>219,233,877</b>	<b>221,826,893</b>
<b>EQUITY</b>			
Accumulated Surplus	41,915,040	42,402,360	44,995,376
Asset Revaluation Reserves	175,563,506	175,563,506	175,563,506
Other Reserves	1,270,801	1,268,011	1,268,011
<b>TOTAL EQUITY</b>	<b>218,749,347</b>	<b>219,233,877</b>	<b>221,826,893</b>



## STATEMENT OF CASH FLOWS

	Annual Budget 2021/2022 \$	Budget Forecast #3 2021/2022 \$	Annual Budget 2022/2023 \$
<b>CASH FLOWS FROM OPERATING ACTIVITIES</b>			
<b>Receipts</b>			
Operating Receipts	21,630,919	21,573,123	22,798,298
Investment Receipts	78,640	58,640	74,661
<b>Payments</b>			
Operating Payments to suppliers & employees	(17,380,955)	(18,064,685)	(18,774,369)
Finance Payments	(261,090)	(197,630)	(236,176)
Net Cash provided by (or used in) Operating Activities	4,067,514	3,369,448	3,862,414
<b>CASH FLOWS FROM INVESTING ACTIVITIES</b>			
<b>Receipts</b>			
Amounts specifically for new or upgraded assets	1,281,020	1,513,930	3,042,000
Sale of Replaced assets	45,500	45,500	186,000
Repayments of Loans by community groups	144,590	144,590	142,642
<b>Payments</b>			
Expenditure on renewal/replacement of assets	(2,603,500)	(4,120,083)	(2,250,000)
Expenditure on new/upgraded assets	(5,535,420)	(5,782,909)	(8,563,000)
Loans made to community groups	-	(80,000)	(100,000)
Net Cash provided by (or used in) Investing Activities	(6,667,810)	(8,278,972)	(7,542,358)
<b>CASH FLOWS FROM FINANCING ACTIVITIES</b>			
<b>Receipts</b>			
Proceeds from Borrowings	1,100,000	1,180,000	3,075,000
<b>Payments</b>			
Repayments of Borrowings	(504,589)	(504,589)	(521,510)
Repayment of Lease Liabilities	(147,624)	(147,624)	(147,624)
Net cash provided by (or used in) Financing Activities	447,787	527,787	2,405,866
Net Increase (Decrease) in cash Held	(2,152,509)	(4,381,737)	(1,274,078)
Cash & Cash Equivalents at beginning of Period	4,906,152	7,783,638	3,401,901
Cash & Cash Equivalents at end of period	2,753,643	3,401,901	2,127,823

## CHANGES IN EQUITY

	Accumulated Surplus \$	Asset Revaluation Reserve \$	Other Reserves \$	TOTAL EQUITY \$
<b>ANNUAL BUDGET 2022/2023</b>				
Balance at end of previous reporting period	42,402,360	175,563,506	1,268,011	219,233,877
Restated opening balance	42,402,360	175,563,506	1,268,011	219,233,877
Net Surplus/ (Deficit) for Year	2,593,016	-	-	2,593,016
Balance at End of Period - 30 June 2023	44,995,376	175,563,506	1,268,011	221,826,893
<b>Budget Forecast #3 2021/2022</b>				
Balance at end of previous reporting period	41,827,890	175,563,506	1,268,011	218,659,407
Restated opening balance	41,827,890	175,563,506	1,268,011	218,659,407
Net Surplus/ (Deficit) for Year	547,470	-	-	574,480
Balance at End of Period - 30 June 2022	42,402,360	175,563,506	1,268,011	219,233,877
<b>Annual Budget 2021/2022</b>				
Balance at end of previous reporting period	40,870,859	175,563,506	1,270,801	217,705,166
Restated opening balance	40,870,859	175,563,506	1,270,801	217,705,166
Net Surplus/ (Deficit) for Year	1,044,182	-	-	1,044,182
Balance at End of Period - 30 June 2022	41,915,041	175,563,506	1,270,801	218,749,348



# FUNDING THE BUSINESS PLAN

An operating deficit of \$448,984 is forecast for 2022/2023. The operating deficit measures the difference between operating revenue and expenses for the period. The Council's long term financial sustainability is dependent on ensuring that, on average over time, its expenses are less than its revenue, in accordance with the Long Term Financial Plan.

Council's revenue in 2022/2023 includes \$16,372,919 proposed to be raised from general and other rates revenue. This is based on an increase in general rates revenue of 4.4%.

The graph below outlines the break-up of operational funding budgeted to be received for the 2022/2023 financial year.

Other sources of revenue for the City of Port Lincoln are:

**User Pays Charges set by Council** – these charges are mainly for Council's Resource Recovery Centre, but also include private works and other use of Council's facilities.

**Statutory Charges set by State Government** – these are fees and charges set by regulation and collected by the Council for regulatory functions such as assessment of development applications

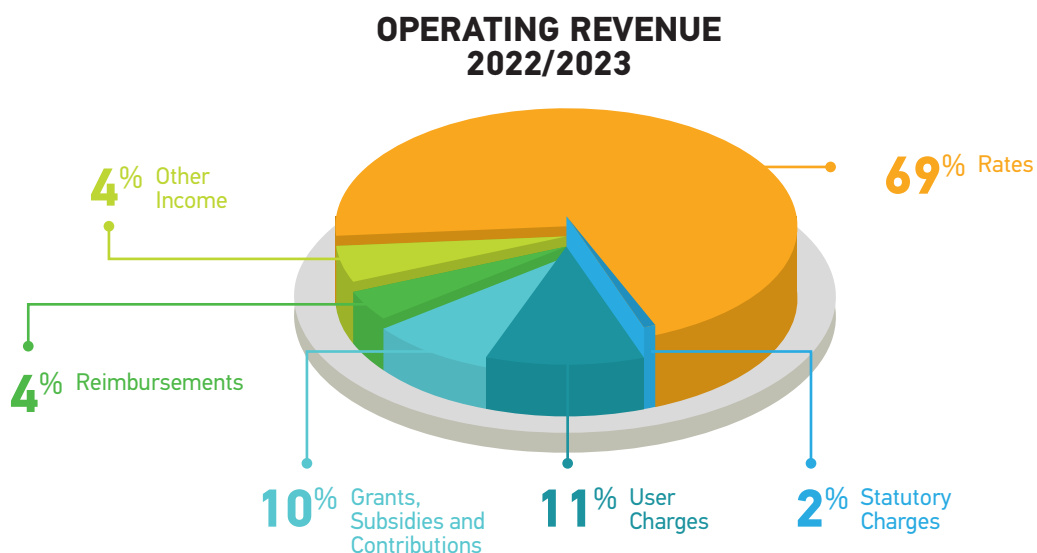
and dog registrations. The revenue from statutory charges generally off-set the cost of the service.

**Grants, Subsidies and Contributions** – the Council normally seeks to attract as much grant funding as possible from other levels of government, and major projects of wider State benefit are usually jointly funded in partnership with the State Government and other relevant parties.

**Investment Income** – Council invests funds for future maintenance and capital projects in interest bearing accounts.

**Commercial Rental Income** – in recent times Council has entered into a number of commercial leasing arrangements which has seen a new revenue source from commercial rental income from the Flinders Theatre and the Nautilus Arts Centre.

Throughout the next financial year and beyond, Council will also be investigating strategic borrowings to assist with capital development into the future. The current record low interest rates available to Council may assist in Council's cashflow throughout the year and provide additional financial resourcing opportunities.



# FINANCIAL SUSTAINABILITY

Amendments to the Local Government Act 1999 in 2005, combined with an independent review initiated by the Local Government Association of SA into the long term financial sustainability of South Australian councils, clearly indicated that there was a need for councils to take a longer term view into their financial planning and sustainability in working towards their goals.

**Council is committed to ensuring its long term financial sustainability.**

Council's financial sustainability is dependent on ensuring that, on average over time, its expenses are at least matched by its revenue.

In addition, capital expenditure on existing infrastructure and other assets should be optimised in accordance with Council's long term renewal programs as referenced in Council's Infrastructure & Asset Management Plan.

Regulation 7 of the Local Government (Financial Management) Regulations 2011 states:

*Pursuant to section 123(10)(b) of the Act, each budget of a council under the Act must – include estimates with respect to the council's operating surplus ratio, asset sustainability ratio and net financial liabilities ratio presented in a manner consistent with the note in the Model Financial Statements entitled Financial Indicators.*

## OPERATING SURPLUS RATIO

The operating surplus ratio expresses the operating surplus (deficit) as a percentage of operating income.

This ratio answers the question: *Is Council covering its operating expenditure and depreciation charge from its operating revenue?*

The forecast Operating Surplus Ratio for 2022/2023 of -1.9% represents operating income budgeted to be \$448,984 less than Council's operating expenses for the year.

This falls within the acceptable limits of between -3% and +5% as per Council's Long Term Financial Plan.

Calculation of Operating Surplus Ratio	Budget 2022/2023
Operating Surplus (a)	(448,984)
Operating Revenue (b)	23,706,160
Operating Surplus Ratio (a)/(b)	(1.9%)

## ASSET SUSTAINABILITY RATIO

The Asset Sustainability Ratio indicates whether the Council is renewing or replacing existing non-financial assets at the same rate as its overall stock of assets is wearing out.

The ratio is calculated by measuring capital expenditure on renewal and replacement of assets relative to depreciation.

The targeted ratio is between 90% and 110% and Council budgeted for 100% which indicates that Council is allocating sufficient funds to replace its assets.



## NET FINANCIAL LIABILITIES & NET FINANCIAL LIABILITIES RATIO

Net financial liabilities is a comprehensive measure of the indebtedness of the Council as it includes items such as employee long-service leave entitlements and other amounts payable as well as taking account of the level of Council's available cash and investments.

Specifically, Net Financial Liabilities equals total liabilities less financial assets, where financial assets for this purpose includes cash, cash equivalents, trade and other receivables, and other financial assets, but excludes equity held in Council businesses, inventories and land held for resale.

The following table sets out revised estimates as at 30 June 2023.

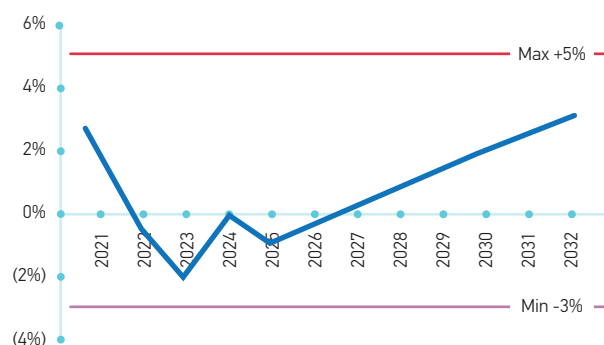
Calculation of Net Financial Liabilities Ratio	Estimated 30/6/2023 \$,000
Net Financial Liabilities (a)	14,324
Total Operating Revenue (b)	23,706
Net Financial Liabilities Ratio (a)/(b)	60%

## ASSESSMENT OF LONG TERM FINANCIAL SUSTAINABILITY

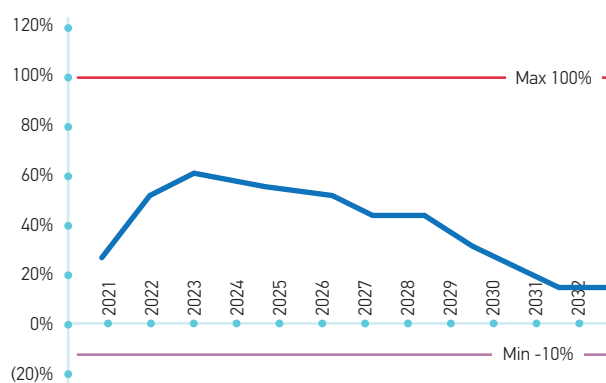
The below 10 year ratios indicate that the 10 year LTFP is financially sustainable:

- A moderate deficit in 2022/2023, thereafter improving in operating result for the remaining years of the plan, returning to surplus in year 5.
- Net Financial Liabilities are at acceptable levels; &
- Asset Sustainability Ratios are at acceptable levels.

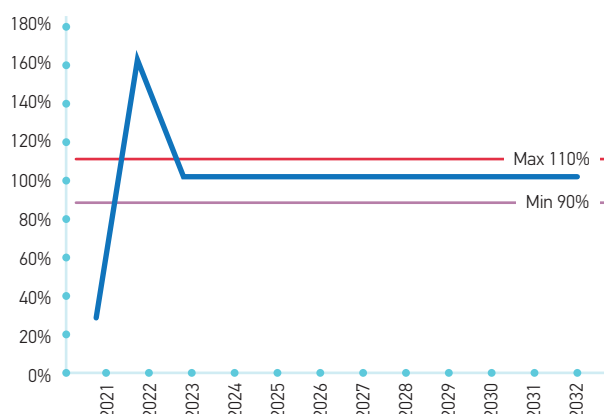
## OPERATING SURPLUS RATIO



## NET FINANCIAL LIABILITIES



## ASSET SUSTAINABILITY RATIO



# RATING POLICY AND ARRANGEMENTS

## RATING ARRANGEMENTS 2022/2023

The rate revenue increase has been kept to a level to enable funding of on-going operational expenses, renewal infrastructure works, priority new/upgrade capital and operational new initiatives – and return an Operational Result within the target range.

Council's LTFP forecasts a total rate revenue increase for 2022/2023 of 4.4% in RATE REVENUE DOLLARS. The forecast rate revenue increase in the Long Term Financial Plan incorporates and reflects anticipated growth of the city's rate base plus a Consumer Price Indexation estimate.

### Rating Basis – Site Value

The City of Port Lincoln will continue to use site value as the basis for valuing land within the council area for the 2022/2023 financial year.

Council acknowledges that most Council's in South Australia have adopted the 'capital value' basis, and that the Local Government Reform Bill passed in 2021 will require a transition from site value to capital value based rating. This process will begin in 2022/2023 for implementation in 2023/2024.

Of the site valuations, \$69,844,336 are non-rateable properties and \$1,081,347,164 are rateable properties for 2022/2023.

### Introduction of Differential Rating

In preparation for the transition to capital rates, Council has created land use codes so properties of similar purpose can be rated proportionately into the future under the capital value system. This is known as differential rating; however, it should be noted that there will be no difference in the rate in the dollar between the land use codes in the 2022/2023 financial year.

Land use Codes:

- Residential
- Commercial
- Industrial
- Vacant
- Primary Producers
- Marina Berths
- Other

### General Rates (s153 and s156)

The Long Term Financial Plan forecasts a target rate revenue increase for 2022/2023 of 4.4% on the GENERAL RATES (including 'rate in the dollar' component) compared to the previous year, to fund this Annual Business Plan. The percentage rate revenue increase applied in the Annual Business Plan is consistent with funding of the projects, programs and services that Council has included in the Annual Business Plan and Annual Budget.

The general rate revenue calculation is shown in **Table 1. General Rate Revenue Calculation**

The table below demonstrates that although the total general rate revenue raised is to increase by 4.4%, the planned increase in the average rate per assessment is 4.07% (total general rate revenue divided by the total number of properties that the rate revenue is distributed across), when the new total revenue is applied to the new number of assessable properties in 2022/2023.

Pursuant to Sections 159 to 165 of the Local Government Act 1999, Council is required to provide mandatory rate rebates to land that is either owned, occupied or used for purposes as described in these sections. Section 166 of the Act also provides that Council may grant discretionary rebates for the purposes as described in Section 166. Council currently provides mandatory rebates



**Table 1. General Rate Revenue Calculation**

Total General Rate Revenue for 2021/2022 Budget	Total Percentage Increase 2021/2022	In Comparison Total % Increase in 2020/2021	Total General Rate Revenue for 2022/2023 Budget	Total Percentage Increase 2022/2023	In Comparison Total % Increase in 2021/2022
\$12,442,298	4.00%	1%	\$12,986,290	4.37%	4%

2021/2022	2021/2022	2021/2022	Total % Increase on Average Per Property	2022/2023	2022/2023	2022/2023	Total % Increase on Average Per Property
Total General Rate Revenue	Number of Properties Rates Distribution	Average proposed General Rate Per Property		Total General Rate Revenue	Number of Properties Rates Distribution	Average proposed General Rate Per Property	
\$12,442,298	8,519	\$1,460.54	3.59%	\$12,986,290	8,544	\$1,519.93	4.07%

to 122 properties and discretionary rate rebates to 27 properties.

In addition to a general rate, Council will raise income through Service Charges for Recycling and Waste Collection.

The 2022/2023 Budget has been developed to enable Council to undertake the planned services, programs and proposed projects, in line with its financial sustainability objective and principles.

The total rate revenue to be raised for this Annual Business Plan is provided in the summary below in the context of the overall forecast cash flow impact of Council activities.

In order to adopt a sustainable and responsible Annual Business Plan and Budget, Council has reviewed project priorities together with other key budget drivers, demonstrating a clear nexus between any additional debt or reserves use and the community outcomes to be achieved.

The net proceeds of rates received for budget purposes will also reflect additional revenues and expenses related to rates, including revenue for the Regional Landscape Levy, formerly known as the Natural Resources Management Levy, penalties for late payment, rates and legal costs recovered, less rebates, rate remissions and write-offs and the rates early payment discount.

Rate in the Dollar Summary			
		Rate in Dollar component	Increased rates raised - Rate in Dollar component
Total Rate in Dollar Charge 2021/2022	\$0.008215	\$8,640,923	
Total Rate in Dollar Charge 2022/2023	\$0.008392	\$9,074,665	\$433,742

To raise **General Rate Revenue** that is identified in the section **FUNDING THE ANNUAL BUSINESS PLAN**, Council declares a **rate in the dollar of \$0.008392** based on the site valuation of land within the City of Port Lincoln together with a fixed charge per rateable property.

### Fixed Charge

The Council has elected to impose a fixed charge system, rather than a minimum rate which tends to distort the equity principles of taxation.

The reasons for imposing a combination of rate in the dollar and a fixed charge are:

- The Council considers it appropriate that all rateable properties make a contribution to the cost of administering the Council's activities and maintaining the physical infrastructure that supports each property;

- The fixed charge system has a lesser proportionate impact on lower income earners than a minimum rate system;
- The fixed charge system is more readily understandable than a minimum rate system.

The fixed charge for 2022/2023 will be levied uniformly on all non-contiguous assessments excluding Marina Berths. The fixed charge is levied against the whole of an allotment (including land under a separate lease or license) and only one fixed charge is levied against two or more pieces of adjoining land (whether intercepted by a road or not) if the same owner occupies and owns them.

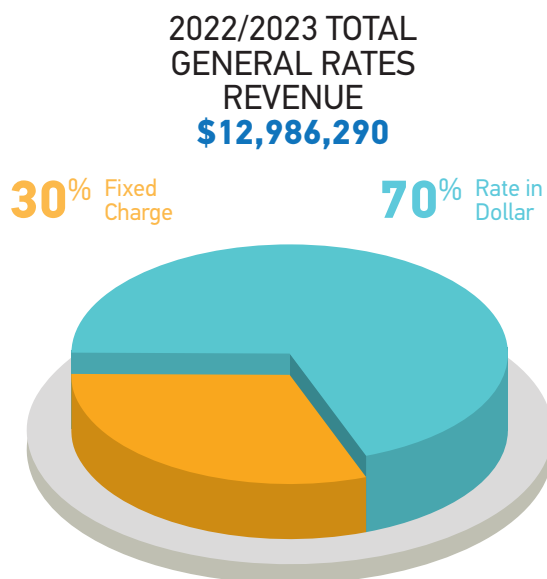
Council has in the past increased the fixed charge by a nominal \$10 per year and will maintain a \$10 increase for 2022/2023.

Fixed Charge Summary			
	2021/2022	2022/2023	
Number of rateable properties	8,519	8,544	
Less Adjoining properties	183	148	
Marina berths	161	161	
Adjusted number of properties fixed charge applicable to	8,175	8,235	
		Fixed Charge component	Increased rates raised - Fixed Charge component
Total Fixed Charge 2021/2022	\$465	\$3,801,375	
2022/2023 Fixed Charge	\$475	\$3,911,625	\$110,250



Pursuant to Section 151(10) of the Local Government Act 1999, revenue raised from the Fixed Charge component cannot raise an amount that exceeds 50% of all revenue raised by the Council from general rates.

#### Rate Revenue from Fixed Charge and calculated Rate in the Dollar Rates



### Waste and Recycling Service Charges

Pursuant to Section 155 of the Local Government Act 1999, Council has declared service charges for both the waste and recycling collection services.

The Waste Service Charge is based on the nature of the service in respect of all land within the area of the City of Port Lincoln to which Council provides or makes available a waste collection service.

Council does not provide kerbside recycling services to properties assessed by the Valuer General's Office as vacant land or marina berths, and therefore these properties do not attract the Recycling Service Charge.

To be equitable to all ratepayers, property owners should be charged for the services they are eligible to receive from Council. Council continues to model for full cost recovery on waste and recycling services totalling **\$333.98** where applicable, as shown in the table below:

Waste and Recycling Service Charges				
	2021/2022		2022/2023	
Number of rateable properties	8,519		8,544	
Less exempt from charges under Lease or License	11		11	
Number of rateable properties Waste Service Charge applicable	<b>8,508</b>		<b>8,533</b>	
Less Marina Berths	161		161	
Less Vacant Land	412		422	
Number of rateable properties Recycling Service Charge applicable	<b>7,935</b>		<b>7,950</b>	

	Service Charges		Total Amount Raised	
	2021/2022	2022/2023	2021/2022	2022/2023
Waste Service Charge	\$265.80	\$277.76	\$2,261,426	\$2,370,126
Recycling Service Charge	\$53.80	\$56.22	\$426,903	\$446,949
Combined Service Charge	<b>\$319.60</b>	<b>\$333.98</b>	<b>\$2,688,329</b>	<b>\$2,817,075</b>

Although the City of Port Lincoln has experienced significant growth in property values in the past, from \$267 million in June 2002 to over \$1.1 billion at present, the property values have not continued to increase at the same rate over the last 4 years. Over the last year, however the total site value across the Council has increased noticeably.

The Annual Business Plan has calculated that an increase in assessment numbers between 2021/2022 and 2022/2023 will be less than 0.5%. This determination of rate revenue and rates setting had regard for the growth of the city and the rate base as reflected in the new assessments advised by the Valuer General at the time of budget adoption.

Council staff have undertaken Rates Modelling as part of the annual budgeting process. The modelling system is based on the total amount of rates revenue Council needs to raise, including the Fixed Charge component, applied over the number of assessments. Modelling also reflects the other rating variations applicable to each property in regards to the Service Charges and the Regional Landscape Levy.

In adopting the Annual Business Plan and subsequently the Annual Budget for 2022/2023, Council has determined the rating model considered to be the most fair and equitable to residents and ratepayers.

The City of Port Lincoln does not proportionally raise rates on new developments throughout the financial year.

Property valuations are determined and advised by the State Valuation Office and vary from year

to year. One property's site value in relation to other properties will affect the relative change to the General Rates amount applicable to any one assessment, when compared to the 'average'.

The increase in the general rate revenue, which is inclusive of the rate in the dollar and fixed charge components, when applied across all rateable properties including new assessments, averages a total increase of 4.07% per assessment. This does not include the increase in the Regional Landscape Levy, which is not determined by Council.

The table below is provided as an indicative illustration of the overall impact of the proposed increases in the revenue to be generated from general rates, services charges and Landscape Levy when applied to the estimated 2022/2023 total property assessments. The Landscape Levy comparison is based solely on the Residential, Other and Vacant Land Use Rate as the impact on other land use user groups will differ. The actual impact on an individual assessment may not be the same as the examples provided and may be more or less than the average.

## Regional Landscape Levy

The City of Port Lincoln currently falls within the Eyre Peninsula Landscape Board region. The Landscape South Australia Act 2019 allows the process for collecting Levy funds on behalf of the Eyre Peninsula Landscape Board (EPL) to raise funds by way of a fixed charge levy to assist in funding the operations of the Board. The fixed charge is imposed as a separate rate upon all properties within the area of the Board.

### Regional Landscape Levy

	2021/2022	2022/2023	\$ Difference	% increase
Average General Rates	\$1,460.54	\$1,519.93	\$59.39	4.07%
Waste & Recycling Service Charges	\$319.60	\$333.98	\$14.38	4.50%
Combined Average Rates & Services Charges	\$1,780.14	\$1,853.91	\$73.77	4.14%
Landscape Levy	\$80.30	\$80.84	\$0.54	0.67%
<b>Total including Landscape Levy</b>	<b>\$1,860.44</b>	<b>\$1,934.75</b>	<b>\$74.31</b>	<b>3.99%</b>



The amount of the levy per property is now determined by the fixed rate applicable to the particular land use as advised by the EPL Board as follows:

**Residential, Other and Vacant Land: \$80.84**  
**Commercial and Industrial Land: \$121.26**  
**Primary Producers: \$161.68**

Council is required to collect this revenue and pay the amount collected to the EPL Board. It does not retain this revenue or determine how the revenue is spent, nor does it determine the amount of the levy to be collected. The total amount of funds Council is required to raise for the EPL Board based on the property data provided to the EPL Board in October 2021, for the City of Port Lincoln Council area for 2022/2023 is estimated to be \$712,806. This represents an increase of 2.7% on the amount paid in 2021/2022.

## Rates Summary

General Rate on Property Value @ \$0.008392	\$9,074,665
Fixed Charge @ \$475.00	\$3,911,625
Waste Service Charge @ \$277.76	\$2,370,126
Recycling Service Charge @ \$56.22	\$446,949
Landscape Levy Charge @ \$80.84*	\$712,806
<b>TOTAL RATE &amp; SERVICE CHARGE REVENUE</b>	<b>\$16,516,172</b>

Note : The Landscape Levy charge referenced above applies to residential properties and vacant land. Commercial and Industrial Land uses attract a rate of \$121.26 and Primary Producers attract a charge of \$161.68 per property.



Any queries regarding the Landscape Levy  
should be raised with the  
Eyre Peninsula Landscape Board  
Telephone **08 8688 3200**  
or website **[www.landscape.sa.gov.au/ep](http://www.landscape.sa.gov.au/ep)**

## Rates Impact Statement

### Residential Properties

Valuation	2021/2022	2022/2023	Difference	% Change
\$80,000	\$1,441.80	\$1,480.34	\$38.54	2.67%
\$160,000	\$2,099.00	\$2,151.70	\$52.70	2.51%
\$250,000	\$2,838.35	\$2,906.98	\$68.63	2.42%
\$370,000	\$3,824.15	\$3,914.02	\$89.87	2.35%

### Commercial Properties

Valuation	2021/2022	2022/2023	Difference	% Change
\$72,000	\$1,376.08	\$1,413.20	\$37.12	2.70%
\$95,000	\$1,565.03	\$1,606.22	\$41.19	2.63%
\$300,000	\$3,249.10	\$3,326.58	\$77.48	2.38%
\$690,000	\$6,452.95	\$6,599.46	\$146.51	2.27%

The tables illustrate the impact of the proposed rates to be applied for 2022/2023 in comparison to the 2021/2022 financial year using the referenced property valuations. The percentage increase in rates for residential properties, will vary, but as shown in the table, generally is below the advertised rate revenue increase of 4.4%.

## Payment of Rates

Payment of rates for the year ending 30 June 2023 will be allowed to be paid in quarterly instalments with the first payment due on the **second** Friday of September 2022 and the **first** Friday in December 2022, March 2023 and June 2023.

A quarterly rates notice will be sent to ratepayers at least 30 days prior to each due date. A ratepayer may also pay their rates in a single instalment due by **9 September 2022**.

To make bill paying more convenient for customers, the City of Port Lincoln provides the following services for the payment of the rates notice:

- BPAY service using the telephone or Internet. BPAY is available 24 hours a day, 7 days a week. Contact your Bank or financial institution for further details.
- Payment through the mail by posting a cheque with the 'tear off' remittance advice to the City of Port Lincoln.
- Payment in person at the Council Office, Level One, Civic Centre, 60 Tasman Terrace, Port Lincoln. Cheque, cash and EFTPOS facilities are available Monday to Friday 9am to 4.30pm.
- Payment via Council Website – at anytime.

### Incentive for Early Payment of Rates

Council has previously offered a 2% discount for payment of rates received in full on or before the September payment date, and will continue to offer a 2% discount for payment of rates and charges in full on or before **Friday 9 September 2022**.

### Late Payment of Rates

The Local Government Act provides that Council imposes an initial fine of 2% on any payment of rates, whether by instalment or otherwise, that is received late. A payment that continues to be late is then charged a prescribed interest rate on the expiration of each month that it continues to be late.

Should Council refer the debt to a debt collection agency for collection, then any debt collection charges will be recoverable from the ratepayer. When Council receives a payment in respect of overdue rates Council applies the money as follows;

- To satisfy any costs awarded in connection with court proceedings to satisfy any interest costs,
- Payment of any fines imposed, and
- Payment of rates, in chronological order, starting with the oldest account first.



### Recovery of Outstanding Rates

The Council has a documented procedure for the recovery of outstanding rates. The process is based on the forwarding of reminder notices when a rate instalment is unpaid, if that instalment and the next remain unpaid after the next instalment reminder is sent out, the outstanding amount is referred to Council's debt collection agent for recovery action.

### Sale of Land for Non-Payment of Rates

The Local Government Act 1999 provides that a Council may sell any property where the rates have been outstanding for three years or more. The Council is required to notify the owner of the land of its intention to sell the land, provide the owner with details of the outstanding amount(s), and advise the owner of its intention to sell the land if payment is not received within one month.

### Rate Concessions

In previous years the State Government, in providing equity across SA in this area, funded a range of concessions on Council rates. The State Government ceased providing direct funding of Council rates concessions for eligible pensioners and self-funded retirees in 2015-2016 and introduced an alternative form of concession funding for eligible pensioners and self-funded retirees which can be applied to any need at the discretion of the recipient.

Council rates concessions are no longer directly applied and the full rates account is payable.

### Remission and Postponement of Rates

Individuals and businesses can apply to have their rates postponed and/or enter into an agreed

payment plan if they meet the hardship criteria outlined in Council's Financial Hardship Policy 7.63.17. This will be upon application and assessed on a case by case basis.

### Rebate of Rates

The Local Government Act 1999 requires councils to rebate the rates payable on some land. Specific provisions are made pursuant to Section 160 to 165 for land used for health services, community services, religious purposes, public cemeteries and educational institutions. Council also provides Discretionary Rebates for some community groups or organisations pursuant to Section 166, however this rebate is not applicable to rateable properties owned or managed by community groups holding a licence pursuant to the Liquor Licensing Act 1997.

An application for rebate shall only be required upon establishment of a property which meets the criteria as outlined in the Local Government Act 1999 and the rebate will continue to be applied annually unless Council is notified, or becomes aware, of a change in circumstances.

### Policy 7.63.8 Rates Concession Scheme

As per Section 166 and Council's Policy 7.63.8 Rates Concession Scheme, Council also provides some rebates of rates to encourage continuing building activity and land development in the City. These are in relation to development construction with a value in excess of \$1,000,000 and subdivision development, including strata and community title developments, where there are unsold new allotments.



Ratepayers can obtain further information about concessions by:

Telephoning the Department of Human Services  
– ConcessionsSA Hotline:

on **1800 307 758**

Email: [concessions@sa.gov.au](mailto:concessions@sa.gov.au)

Visiting the website: [www.dhs.sa.gov.au](http://www.dhs.sa.gov.au)

## LONG TERM FINANCIAL PLAN 2023-2032 - FINANCIAL SUMMARY

### ESTIMATED COMPREHENSIVE INCOME STATEMENT

Year Ended 30 June:	2021 Actual	2022 Esti- mate	2023 Plan Year 1	2024 Plan Year 2	2025 Plan Year 3	2026 Plan Year 4	2027 Plan Year 5	2028 Plan Year 6	2029 Plan Year 7	2030 Plan Year 8	2031 Plan Year 9	2032 Plan Year 10
	\$('000)	\$('000)	\$('000)	\$('000)	\$('000)	\$('000)	\$('000)	\$('000)	\$('000)	\$('000)	\$('000)	\$('000)
<b>INCOME</b>												
Rates	15,141	15,699	16,373	17,078	17,797	18,474	19,177	19,907	20,664	21,451	22,268	23,117
Statutory Charges	355	348	360	371	380	390	400	410	420	431	442	453
User Charges	2,772	2,440	2,771	2,792	2,862	2,934	3,007	3,082	3,159	3,238	3,319	3,402
Grants, subsidies, contributions	2,551	1,587	2,285	2,347	2,176	2,230	2,286	2,343	2,402	2,462	2,524	2,587
Investment Income	49	59	75	79	87	83	85	86	93	101	105	113
Reimbursements	564	1,050	835	860	882	904	927	950	974	998	1,023	1,049
Other Income	968	1,207	1,068	1,100	1,128	1,156	1,185	1,215	1,245	1,276	1,308	1,341
<b>Total Revenues</b>	<b>22,400</b>	<b>22,390</b>	<b>23,707</b>	<b>24,627</b>	<b>25,312</b>	<b>26,171</b>	<b>27,067</b>	<b>27,993</b>	<b>28,957</b>	<b>29,957</b>	<b>30,989</b>	<b>32,062</b>
<b>EXPENSES</b>												
Employee costs	6,183	6,641	7,252	7,538	7,789	8,067	8,347	8,640	8,942	9,255	9,580	9,915
Materials, contracts & other expenses	10,902	12,322	12,496	12,241	12,669	13,112	13,571	14,046	14,538	15,047	15,574	16,119
Depreciation	4,475	4,168	4,172	4,304	4,430	4,446	4,479	4,496	4,503	4,520	4,537	4,554
Finance Costs	226	198	235	359	438	410	383	355	329	301	275	259
Future Operating New Initiatives	0	0	0	150	154	158	162	166	170	174	178	182
<b>Total Expenses</b>	<b>21,786</b>	<b>23,329</b>	<b>24,155</b>	<b>24,592</b>	<b>25,480</b>	<b>26,193</b>	<b>26,942</b>	<b>27,703</b>	<b>28,482</b>	<b>29,297</b>	<b>30,144</b>	<b>31,029</b>
<b>OPERATING SURPLUS/(DEFICIT) BEFORE CAPITAL AMOUNTS</b>	<b>614</b>	<b>(939)</b>	<b>(448)</b>	<b>35</b>	<b>(168)</b>	<b>(22)</b>	<b>125</b>	<b>290</b>	<b>475</b>	<b>660</b>	<b>845</b>	<b>1,033</b>
Net gain/(loss) on disposal or revaluations	(245)	0	0	115	123	152	212	107	404	142	153	188
Amounts specifically for new assets	13	1,514	3,042	1,077	0	0	0	0	0	0	0	0
<b>NET SURPLUS/(DEFICIT)</b>	<b>382</b>	<b>575</b>	<b>2,594</b>	<b>1,227</b>	<b>(45)</b>	<b>130</b>	<b>337</b>	<b>397</b>	<b>879</b>	<b>802</b>	<b>998</b>	<b>1,221</b>
<b>Other Comprehensive Income</b>												
Changes in revaluation surplus - IPP&E	163	(1)	0	0	0	0	0	0	0	0	0	0
<b>Total Other Comprehensive Income</b>	<b>163</b>	<b>(1)</b>	<b>0</b>	<b>0</b>	<b>0</b>	<b>0</b>	<b>0</b>	<b>0</b>	<b>0</b>	<b>0</b>	<b>0</b>	<b>0</b>
<b>TOTAL COMPREHENSIVE INCOME</b>	<b>545</b>	<b>574</b>	<b>2,594</b>	<b>1,227</b>	<b>(45)</b>	<b>130</b>	<b>337</b>	<b>397</b>	<b>879</b>	<b>802</b>	<b>998</b>	<b>1,221</b>

# LONG TERM FINANCIAL PLAN 2023-2032 - FINANCIAL SUMMARY

## ESTIMATED BALANCE SHEET

Year Ended 30 June:		2021 Actual \$('000)	2022 Esti- mate \$('000)	2023 Plan Year 1 \$('000)	2024 Plan Year 2 \$('000)	2025 Plan Year 3 \$('000)	2026 Plan Year 4 \$('000)	2027 Plan Year 5 \$('000)	2028 Plan Year 6 \$('000)	2029 Plan Year 7 \$('000)	2030 Plan Year 8 \$('000)	2031 Plan Year 9 \$('000)	2032 Plan Year 10 \$('000)
<b>ASSETS</b>													
<b>Current Assets</b>													
Cash & Equivalent Assets		7,784	3,401	2,127	4,528	4,238	4,322	5,490	5,030	6,994	8,525	10,779	10,532
Trade & Other Receivables		1,692	1,689	1,642	1,640	1,644	1,648	1,652	1,583	1,571	1,566	1,548	1,548
<b>Total Current Assets</b>		9,476	5,090	3,769	6,168	5,882	5,970	7,142	6,613	8,565	10,091	12,327	12,080
<b>Non-Current Assets</b>													
Receivables		622	569	575	487	391	291	187	152	129	111	111	111
<b>Total Non-Current Assets</b>		224,613	230,246	236,726	237,317	236,858	236,485	235,156	235,620	234,134	233,013	231,368	232,429
<b>Total Assets</b>		<b>234,089</b>	<b>235,336</b>	<b>240,495</b>	<b>243,485</b>	<b>242,740</b>	<b>242,455</b>	<b>242,298</b>	<b>242,233</b>	<b>242,669</b>	<b>243,104</b>	<b>243,695</b>	<b>244,509</b>
<b>LIABILITIES</b>													
<b>Current Liabilities</b>													
Trade & Other Payables		2,347	2,338	2,347	2,354	2,333	2,372	2,380	2,404	2,421	2,442	2,460	2,481
Borrowings		505	521	536	876	748	768	789	738	746	767	789	806
Provisions		969	969	985	1,039	1,049	1,080	1,102	1,130	1,156	1,183	1,212	1,241
Other Current Liabilities		182	183	183	183	183	183	183	183	183	183	183	183
<b>Total Current Liabilities</b>		4,003	4,011	4,051	4,452	4,313	4,403	4,454	4,455	4,506	4,575	4,644	4,711
<b>Non-Current Liabilities</b>													
Trade & Other Payables		15	21	17	20	17	17	15	15	15	15	15	15
Borrowings		7,457	8,116	10,655	11,696	10,948	10,180	9,391	8,653	7,907	7,140	6,351	5,545
Provisions		3,955	3,955	3,945	4,264	4,453	4,717	4,962	5,237	5,519	5,820	6,133	6,465
<b>Total Non-Current Liabilities</b>		11,427	12,092	14,617	15,980	15,418	14,914	14,368	13,905	13,441	12,975	12,499	12,025
<b>Total Liabilities</b>		<b>15,430</b>	<b>16,103</b>	<b>18,668</b>	<b>20,432</b>	<b>19,731</b>	<b>19,317</b>	<b>18,822</b>	<b>18,360</b>	<b>17,947</b>	<b>17,550</b>	<b>17,143</b>	<b>16,736</b>
<b>NET ASSETS</b>		<b>218,659</b>	<b>219,233</b>	<b>221,827</b>	<b>223,053</b>	<b>223,009</b>	<b>223,138</b>	<b>223,476</b>	<b>223,873</b>	<b>224,752</b>	<b>225,554</b>	<b>226,552</b>	<b>227,773</b>
<b>EQUITY</b>													
Accumulated Surplus		41,828	42,403	44,997	46,223	46,179	46,308	46,646	47,043	47,922	48,724	49,722	50,943
Asset Revaluation Reserve		175,563	175,562	175,562	175,562	175,562	175,562	175,562	175,562	175,562	175,562	175,562	175,562
Other Reserves		1,268	1,268	1,268	1,268	1,268	1,268	1,268	1,268	1,268	1,268	1,268	1,268
<b>TOTAL EQUITY</b>		<b>218,659</b>	<b>219,233</b>	<b>221,827</b>	<b>223,053</b>	<b>223,009</b>	<b>223,138</b>	<b>223,476</b>	<b>223,873</b>	<b>224,752</b>	<b>225,554</b>	<b>226,552</b>	<b>227,773</b>



## LONG TERM FINANCIAL PLAN 2023-2032 – FINANCIAL SUMMARY

### ESTIMATED CASH FLOW STATEMENT

	Year Ended 30 June:	2021 Actual	2022 Esti- mate	2023 Plan	2024 Plan	2025 Plan	2026 Plan	2027 Plan	2028 Plan	2029 Plan	2030 Plan	2031 Plan	2032 Plan
		\$('000)	\$('000)	Year 1 \$('000)	Year 2 \$('000)	Year 3 \$('000)	Year 4 \$('000)	Year 5 \$('000)	Year 6 \$('000)	Year 7 \$('000)	Year 8 \$('000)	Year 9 \$('000)	Year 10 \$('000)
<b>CASH FLOWS FROM OPERATING ACTIVITIES</b>													
<b>Receipts</b>													
Rates			15,660	16,381	17,078	17,797	18,474	19,177	19,907	20,664	21,451	22,268	23,117
Statutory Charges			348	360	371	380	390	400	410	420	431	442	453
User Charges			2,455	2,711	2,792	2,862	2,934	3,007	3,082	3,159	3,238	3,319	3,402
Grants, subsidies, contributions			1,587	2,313	2,336	2,176	2,238	2,290	2,349	2,408	2,468	2,530	2,593
Investment Income			59	75	79	87	83	85	86	93	101	105	113
Reimbursements			1,050	835	860	882	904	927	950	974	998	1,023	1,049
Other Income			1,207	1,068	1,100	1,128	1,156	1,185	1,215	1,245	1,276	1,308	1,341
<b>Payments</b>													
Employee costs			(6,640)	(7,234)	(7,170)	(7,590)	(7,768)	(8,078)	(8,334)	(8,632)	(8,924)	(9,236)	(9,551)
Materials, contracts & other expenses			(12,310)	(12,559)	(12,213)	(12,691)	(13,087)	(13,570)	(14,033)	(14,530)	(15,037)	(15,565)	(16,109)
Finance Costs			(197)	(236)	(362)	(438)	(408)	(382)	(353)	(328)	(299)	(274)	(257)
Future Operating New Initiatives			0	0	(150)	(154)	(158)	(162)	(166)	(170)	(174)	(178)	(182)
<b>Net Cash provided by (or used in) Operating Activities</b>			<b>3,219</b>	<b>3,714</b>	<b>4,721</b>	<b>4,439</b>	<b>4,758</b>	<b>4,879</b>	<b>5,113</b>	<b>5,303</b>	<b>5,529</b>	<b>5,742</b>	<b>5,969</b>
<b>CASH FLOWS FROM INVESTING ACTIVITIES</b>													
<b>Receipts</b>													
Amounts Specifically for New/Upgraded Assets			1,514	3,042	1,077	0	0	0	0	0	0	0	0
Sale of Renewed/Replaced Assets			46	186	115	123	152	212	107	404	142	153	188
Repayments of Loans by Community Groups			144	143	90	92	96	100	104	35	23	18	0
<b>Payments</b>													
Expenditure on Renewal/Replacement of Assets			(4,120)	(2,250)	(2,578)	(2,587)	(3,162)	(2,211)	(3,475)	(2,065)	(2,421)	(1,876)	(4,579)
Expenditure on New/Upgraded Assets			(5,781)	(8,563)	(2,405)	(1,481)	(1,012)	(1,044)	(1,520)	(975)	(996)	(1,016)	(1,036)
Loans Made to Community Groups			(80)	(100)	0	0	0	0	0	0	0	0	0
<b>Net Cash Provided by (or used in) Investing Activities</b>			<b>(8,277)</b>	<b>(7,542)</b>	<b>(3,701)</b>	<b>(3,853)</b>	<b>(3,926)</b>	<b>(2,943)</b>	<b>(4,784)</b>	<b>(2,601)</b>	<b>(3,252)</b>	<b>(2,721)</b>	<b>(5,427)</b>

Continued...

## LONG TERM FINANCIAL PLAN 2023-2032 - FINANCIAL SUMMARY

### ESTIMATED CASH FLOW STATEMENT

Year Ended 30 June:	2021 Actual \$('000)	2022 Esti- mate \$('000)	2023 Plan Year 1 \$('000)	2024 Plan Year 2 \$('000)	2025 Plan Year 3 \$('000)	2026 Plan Year 4 \$('000)	2027 Plan Year 5 \$('000)	2028 Plan Year 6 \$('000)	2029 Plan Year 7 \$('000)	2030 Plan Year 8 \$('000)	2031 Plan Year 9 \$('000)	2032 Plan Year 10 \$('000)
<b>CASH FLOWS FROM FINANCING ACTIVITIES</b>												
<b>Receipts</b>												
Proceeds from Borrowings		1,180	3,075	1,917	0	0	0	0	0	0	0	0
<b>Payments</b>												
Repayments of Borrowings		(505)	(521)	(536)	(876)	(748)	(768)	(789)	(738)	(746)	(767)	(789)
Repayment of Aged Care Facility Deposits		0	0	0	0	0	0	0	0	0	0	0
<b>Net Cash provided by (or used in) Financing Activities</b>		<b>675</b>	<b>2,554</b>	<b>1,381</b>	<b>(876)</b>	<b>(748)</b>	<b>(768)</b>	<b>(789)</b>	<b>(738)</b>	<b>(746)</b>	<b>(767)</b>	<b>(789)</b>
<b>Net Increase/(Decrease) in cash held</b>		<b>(4,383)</b>	<b>(1,274)</b>	<b>2,401</b>	<b>(290)</b>	<b>84</b>	<b>1,168</b>	<b>(460)</b>	<b>1,964</b>	<b>1,531</b>	<b>2,254</b>	<b>(247)</b>
Opening cash, cash equivalents or (bank overdraft)		7,784	3,401	2,127	4,528	4,238	4,322	5,490	5,030	6,994	8,525	10,779
<b>Closing cash, cash equivalents or (bank overdraft)</b>	<b>7,784</b>	<b>3,401</b>	<b>2,127</b>	<b>4,528</b>	<b>4,238</b>	<b>4,322</b>	<b>5,490</b>	<b>5,030</b>	<b>6,994</b>	<b>8,525</b>	<b>10,779</b>	<b>10,532</b>

# PUBLIC CONSULTATION

Council adopted the Draft Annual Business Plan and Budget 2022/2023 and Long Term Financial Plan 2023-2032 - Financial Summary for public consultation on 16 May 2022. Public consultation commenced on 19 May 2022 and concluded 10 June 2022.

Members of the public were invited to view the draft plan via Council's online Engagement Hub at [yoursay.portlincoln.sa.gov.au](https://yoursay.portlincoln.sa.gov.au). Copies of the plan could also be viewed at the Council Administration Office and Port Lincoln Library.

A Special Meeting of Council was held on 30 May 2022, for verbal submissions to be received.

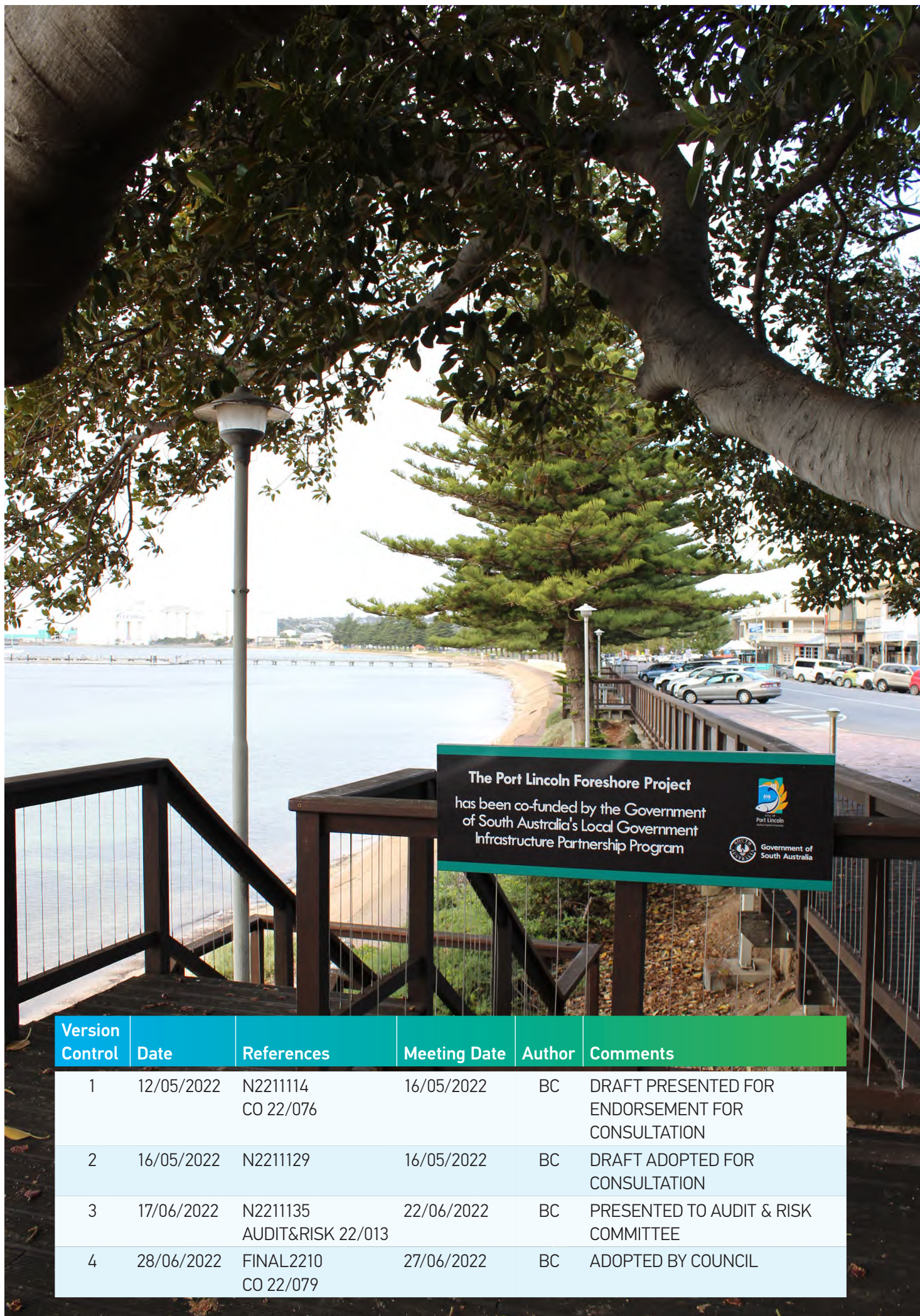
During the consultation period 22 written submissions were received, and two verbal submissions at the Special Council Meeting held on 30 May 2022.

Following the close of the consultation period, the draft plan and consultation report were presented to the Audit and Risk Committee on 22 June 2022.

At the Ordinary Council Meeting held on 27 June 2022, Council formally adopted the Annual Business Plan and Budget for the year ending 30 June 2023.







Version Control	Date	References	Meeting Date	Author	Comments
1	12/05/2022	N2211114 CO 22/076	16/05/2022	BC	DRAFT PRESENTED FOR ENDORSEMENT FOR CONSULTATION
2	16/05/2022	N2211129	16/05/2022	BC	DRAFT ADOPTED FOR CONSULTATION
3	17/06/2022	N2211135 AUDIT&RISK 22/013	22/06/2022	BC	PRESENTED TO AUDIT & RISK COMMITTEE
4	28/06/2022	FINAL2210 CO 22/079	27/06/2022	BC	ADOPTED BY COUNCIL



# CONTACT

For further information on the Annual Business Plan & Budget  
contact the Council Administration Office:

## Council Administration

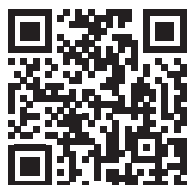
Level One, Civic Centre  
60 Tasman Terrace, Port Lincoln SA 5606  
PO Box 1787, Port Lincoln SA 5606

Telephone: 08 8621 2300 Fax: 08 8621 2399

Email: [plcc@plcc.sa.gov.au](mailto:plcc@plcc.sa.gov.au)

Website: [www.portlincoln.sa.gov.au](http://www.portlincoln.sa.gov.au)

Facebook: [www.facebook.com/cityofportlincoln](http://www.facebook.com/cityofportlincoln)



#portlincoln

