

10.3.7 COUNCILLOR ROWSELL

DATE	ACTIVITY	OUTCOMES
31/7/24	Thank you afternoon tea – Empowering our elders	
2/8/24	CEO catch up	
3/8/24	Mayor’s Concert	
7/8/24	PL High School Art Exhibition	
8/8/24	Elected Member Workshop - Strategic Directions Plan	
10/8/24	EP Day at Norwood Football Club	
11/8/24	Port Lincoln Show	

10.3.8 COUNCILLOR STAUNTON

11. COUNCIL COMMITTEE REPORTS AND MINUTES

Nil

12. COUNCIL REPORTS FOR DECISION

12.1. DRAFT ENVIRONMENTAL SUSTAINABILITY STRATEGY 2025-2034

REPORT PURPOSE

The purpose of this report is to present the Draft Environmental Sustainability Strategy to Council to request endorsement of the draft strategy for public consultation.

RECOMMENDATION

That Council:

- 1. Receive the Draft Environmental Sustainability Strategy; and,**
- 2. Endorse the release of the Draft Environmental Sustainability Strategy for public consultation via ‘Your Say’ for a period of three weeks (21 days), plus one community drop-in meeting session.**

12.1 DRAFT ENVIRONMENTAL SUSTAINABILITY STRATEGY 2025-2034

REPORT INFORMATION								
Report Title	Draft Environmental Sustainability Strategy							
Document ID	39488							
Organisational Unit	Environment & Infrastructure							
Responsible Officer	Environmental Sustainability Officer - Seb Carr							
Report Attachment/s	Yes 39778 Draft Environmental Sustainability Strategy 2025-2034							
REPORT PURPOSE								
The purpose of this report is to present the Draft Environmental Sustainability Strategy to Council to request endorsement of the draft strategy for public consultation.								
REPORT DECISION MAKING CONSIDERATIONS								
Council Role	Provide/Respond - Fully or partially fund or provide a service or respond to a need							
Strategic Alignment	SDP GOAL: Goal 4: Sustainable Environment SDP ACTION: 4.2 Integrate environmental impacts into consideration of service provision and project planning							
Annual Business Plan 2023/24	ABP INITIATIVE: Not Applicable ABP PROJECT: Not Applicable							
Annual Business Plan 2024/25	ABP INITIATIVE: Not Applicable ABP PROJECT: Not Applicable							
Legislation	Not Applicable							
Policy	Environmental Sustainability 5.63.11							
Budget Implications	Not Applicable							
	<table border="1"> <thead> <tr> <th>DESCRIPTION</th> <th>BUDGET AMOUNT \$</th> <th>YTD \$</th> </tr> </thead> <tbody> <tr> <td></td> <td></td> <td></td> </tr> </tbody> </table>		DESCRIPTION	BUDGET AMOUNT \$	YTD \$			
DESCRIPTION	BUDGET AMOUNT \$	YTD \$						
	Budget assessment comments: Current iteration of the Environmental Sustainability Strategy completed using internal resources. Cost estimates for recommended new actions are included in the Strategy and will need to be considered as part of future budgets.							
Risk Implications	Low Risk							
Resource Implications	Not Applicable							
Public Consultation	Yes - Recommended							
IAP2 Commitment	CONSULT - We will keep you informed, listen to and acknowledge concerns and aspirations, and provide feedback on how public feedback input has influenced the decision.							

OFFICER’S RECOMMENDATION**That Council:**

- 1. Receive the Draft Environmental Sustainability Strategy; and,**
- 2. Endorse the release of the Draft Environmental Sustainability Strategy for public consultation via ‘Your Say’ for a period of three weeks (21 days), plus one community drop-in meeting session.**

REPORT DETAIL

Following Council’s Climate Emergency Declaration in 2019, the Strategic Directions Plan 2021-2030 established a Sustainable Environment goal (Goal 4) to be clean, green, renewable and resilient, identifying key focus areas and strategic actions.

Following Council workshops held in September 2023 and July 2024, the Draft Environmental Sustainability Strategy 2025-2034 has been developed to improve integration of sustainability goals in Council services, and outline Council’s long term action plan across five goal areas:

1. Towards Net Zero – reducing our carbon emissions, commencing our journey towards achieving Net Zero by 2050.
2. Climate Change Resilience – planning our city to be resilient and adapt to a changing climate.
3. Waste Minimisation – working to minimise our waste to landfill and support principles of a more circular economy.
4. Water Sensitive – manage our impact on water resources and maintain efficient operations to deliver our city services.
5. Biodiversity Conservation – maintain a healthy natural environment including our waterways, land, and coast.

As the first environmental sustainability strategy for City of Port Lincoln initial primary focus has been placed at the “control” level of action, reflecting the need for development and improvement of organisational systems and data reporting processes to support future decision making and demonstrate leadership in our community.



This strategy supports and brings together other Council strategies and action plans such as the Stormwater Management Plan 2019, Draft Waste and Resources Strategy 2025-2029, Open Space Strategy 2021-26, and establishes the need for additional frameworks to manage Council’s carbon emissions and climate change adaptation planning.

A costed 10 Year Action Plan is included in the draft Strategy.

CONSULTATION PROCESS

It is proposed the Draft Environmental Sustainability Strategy be released for public consultation in conjunction with the Draft Waste and Resource Management Strategy via:

- The “Your Say” platform on Council’s website for 21 days with associated public promotion of the opportunity to provide feedback on the draft strategy by completing an on-line survey
- One community engagement session.

Feedback received during the consultation process will be collated and presented to Council along with the final draft Environmental Sustainability Strategy for adoption at the October Council meeting.



DRAFT ENVIRONMENTAL SUSTAINABILITY STRATEGY 2025-2034



CONTENTS

Executive Summary	1
Community Profile	2
Council Profile	3
Why is this strategy needed?	4
Environmental Sustainability Framework	5
Supporting Plans & Strategies	5
Our Goals	6
10 Year Action Plan	8

ACKNOWLEDGEMENT OF COUNTRY

We acknowledge the Barngarla People, the Traditional Owners of the land on which the City of Port Lincoln rests and their continuing connection to land, sea, culture and community. We pay our respects to Elders past, present and emerging, and we extend that respect to other Aboriginal and Torres Strait Islander people in our community.

EXECUTIVE SUMMARY

These are the actions City of Port Lincoln has planned over the next 10 years to progress our five environmental sustainability goal areas:



1. Towards Net Zero

ACTIONS

- Adopt and implement carbon emission management framework
- Undertake carbon emission reduction projects
- Corporate sustainability governance update
- Additional resourcing for environmental sustainability program
- Support community emission reduction initiatives



2. Climate Resilience

ACTIONS

- Coastal adaptation & risk management planning
- Climate change risk & adaptation planning
- Street tree planting & urban tree canopy mapping
- Update Bushfire Management & Treatment Plan
- Stormwater sea-level rise adaptation planning



3. Waste & Resources

ACTIONS

- Finalise Waste Management Strategy
- Sustainable Kerbside Collection Services: Recycling and FOGO
- Waste & Resources Coordinator
- CBD & Foreshore street recycling bins
- Further initiatives identified in Waste Management Strategy (to be adopted)



4. Water Sensitive

ACTIONS

- Recycled Water Scheme review
- Recycled Water Scheme operational maintenance and asset management
- Council water efficiency initiatives
- WSUD development & stormwater quality improvement initiatives
- Gross Pollutant Trap Installation
- Mallee Park Wetlands
- Western Approach Detention Stage 1
- Racecourse Wetlands



5. Biodiversity

ACTIONS

- Continue to preserve high value reserves and develop action plan
- Regional advocacy & education
- Cat management program
- Murray Point master planning
- WSUD development & stormwater quality initiatives
- Wetlands and stormwater detention projects

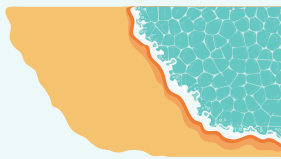
COMMUNITY PROFILE



TOTAL AREA
3,037
Hectares



ESTIMATED POPULATION
14,947
as at June 2022*



COASTLINE
21
Kilometres



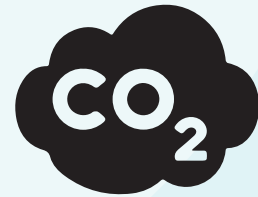
AVERAGE RAINFALL
491
Millimetres
(Source : BOM)



NATIVE VEGETATION
845 Hectares
Source: EBS Ecology Study, 2010



AQUATIC ECOSYSTEM CONDITION IN 2022
dropped from "Good" to
FAIR
Source: EPA South Australia



CARBON EMISSIONS
from the Port Lincoln community
106 kiloton
Source: SnapshotClimate 2021



MEAN CLIMATE PROJECTIONS FOR PORT LINCOLN BY 2030:

Reference period: 1986-2005
Medium emissions scenario (RCP 4.5)



9%
ANNUAL RAINFALL
decline



1°C
CHANGE IN AVERAGE DAILY MAXIMUM TEMPERATURE



11 Increased intensity
OF EXTREME RAINFALL EVENTS

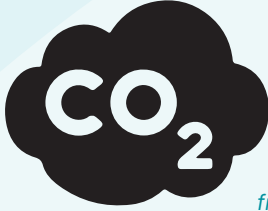


20%
increase in number of days of
SEVERE FIRE DANGER

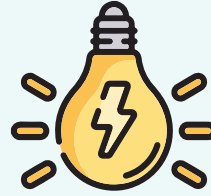
Source: SA Department for Environment and Water

COUNCIL PROFILE

Years vary due to incomplete data sets



776
tonnes
CARBON EMISSIONS
from Council operations
FY21/22



950,000
kWh
ELECTRICITY CONSUMED
by Council assets
in FY21/22

3,888
tonnes
CARBON EMISSIONS
from food and garden
organics in the red bin
in FY23/24

12,281
tonnes
RUBBISH TO LANDFILL
in FY23/24

1,616
tonnes
RECYCLED
in FY23/24



8,280
properties
**RECEIVE KERBSIDE
WASTE SERVICE**

65%
properties
**PARTICIPATING IN
KERBSIDE RECYCLING**



67%
**ORGANIC WASTE
SENT TO LANDFILL**
in FY23/24



1,209
tonnes
MULCH PRODUCED
in FY23/24



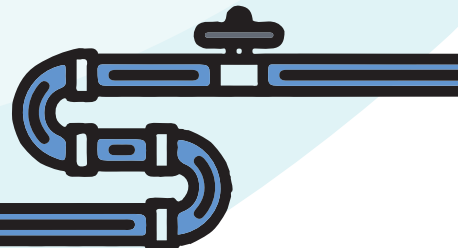
49.6
megalitres
**POTABLE WATER
CONSUMED BY COUNCIL
OPERATIONS**
FY21/22



163,963 m²
OPEN SPACE IRRIGATED
with recycled water

43.8
megalitres
**RECYCLED WATER
FOR IRRIGATION**
of Council reserves
FY22/23

13km **RECYCLED WATER SUPPLY
PIPEWORK**



WHY IS THIS STRATEGY NEEDED?

The City of Port Lincoln is committed to protecting and enhancing our natural environment for future generations. This strategy has been developed to ensure we take an integrated approach to our environmental sustainability goals across Council operations including action on climate change, projects that benefit our local ecosystems and natural resources, improving our internal practices, as well as community support and advocacy for initiatives that contribute to a more sustainable region.

The environmental sustainability goal areas are derived from **Goal 4** of our **Strategic Directions Plan 2021-2030** fall into the following 5 broad categories.



ENVIRONMENTAL SUSTAINABILITY FRAMEWORK

Environmental sustainability is relevant to all the things we do at City of Port Lincoln. This framework illustrates how Council's sustainability goal areas from our Strategic Directions Plan link to our core service delivery areas.

STRATEGIC DIRECTIONS PLAN



ENVIRONMENTAL SUSTAINABILITY FRAMEWORK



1. Towards Net Zero
2. Climate Resilience
3. Waste & Resources
4. Water Sensitive
5. Biodiversity

COUNCIL SERVICES (POLICIES | ACTION PLANS)



Community & Civil Infrastructure
Development Services
Environment & Community
Community & Wellbeing
Corporate Services
Governance Services

SUPPORTING PLANS & STRATEGIES

The following plans and strategies are aligned with this framework:

- Council Climate Emergency Declaration (CO 19/148, August 2019)
- Goal 4, Strategic Directions Plan 2021-2030
- Goal 4, Annual Business Plan 2024/25
- Stormwater Management Plan
- DRAFT Waste Management Strategy
- CBD, Foreshore & Marina Masterplan
- Open Space Strategy 2021-26
- LGA SA Climate Support Program
- LGA SA Climate Ready Coasts Program
- LGA SA Net Zero Accelerate Program
- EP Regional Waste & Resources Strategy
- State & Federal emission reduction legislation targets
- State & Federal targets for food and organic waste management

OUR GOALS

The City of Port Lincoln will be a leader in regional Local Government Environmental Sustainability. We will manage our carbon emissions, plan our city to adapt to a changing climate, and manage our impact on the local environment. We will do this through the following goal areas over the next 10 years.



Both the Australian Government and South Australian Government have adopted policies for action on Climate Change in line with the Paris Agreement and science-based targets approach, with reporting practices emerging across the economy to monitor progress.

Council's target for carbon emissions reduction will be developed in line with this legislation to achieve net zero emissions by 2050. This target will be underpinned by Council through development of an emissions reduction plan incorporating reporting, interim reduction targets and a prioritised action plan to support ongoing investment.

Council will also continue to advocate for and support appropriate initiatives that achieve community wide carbon emissions reduction.



Adverse impacts due to effects of climate change such as frequency and severity of drought, extreme heat, fire danger ratings, and sea level rise pose a risk to our environment, infrastructure, businesses, and the community.

Council will manage this risk through climate change adaptation planning to improve the city's physical assets and services' resilience to climate change. We will also ensure that our planning and development policy decisions are aligned to the current and future needs of our city in the context of a changing climate.

We will also continue to advocate for and support community projects and initiatives that improve our climate change resilience.



Minimising Waste

Managing our waste in line with the waste hierarchy of Prevention, Reuse, Recycle, Recovery and Disposal is crucial to minimising adverse impacts to our natural environment.

To achieve this Council has drafted a Waste and Resources Strategy and Action Plan supported by State and Regional plans based on the following objectives:

1. Reduce waste generation and increase landfill diversion
2. Increase the recovery of resources
3. Deliver reliable, flexible and cost-effective services that meet the needs of the community
4. Protect and conserve the natural environment
5. Implement governance structures that support collaboration and partnerships

Key to achieving these objectives will be a process of reporting on and continual improvement of Council's waste management services, development of additional streams of resource recovery such as the introduction of a kerbside Food Organics and Garden Organics service (FOGO), and supporting community awareness and education around minimising waste.



Water Sensitive

Water is one of our most precious resources. Degradation of our water resources and our coastal and marine environment impacts the economic, social and environmental health of the region.

Council will work with local and state government agencies, businesses, and community stakeholders to incorporate Water Sensitive Urban Design (WSUD) principles in our stormwater network and planning tools to minimise impact of stormwater outfall on our coastal and marine environment. In particular, we will progressively work towards the objectives of the City of Port Lincoln Stormwater Management Plan and industry best practice.

Council will also manage our use of scarce water resources for Council operations. Initiatives that reduce our reliance on potable water use such as management of the recycled water scheme for irrigating Council reserves, improvements to irrigation and monitoring systems, as well as considering the use of rainwater tanks and using water efficient fixtures and fittings will continue to be a priority.



Biodiversity Conservation

Maintaining healthy ecosystems is important for our community. Maintaining a positive relationship between our people and our natural environment will ensure the long-term integrity of these systems.

Public open spaces, parks, reserves and trails will be responsibly designed, developed and managed to minimise the use of chemicals, control environmental pests and weeds, and enhance the urban tree canopy to preserve, protect and improve biodiversity in our natural environment.

Council will implement and continually improve its bushfire prevention planning and practice for Council reserves based on the key principle of managing fuel loads whilst preserving biodiversity in accordance with the Lower Eyre Peninsula Bushfire Management Area Plan.

We will also work collaboratively with partners and the community to build knowledge and opportunities to connect and care for the natural environment.

10 YEAR ACTION PLAN

Note: Estimated Budget Allowances Only

1. Towards Net Zero

GMEI, GMCC, MCAO, MFB, MPP

STRATEGY ITEM	Team	Role	24/25	25/26	26/27	27/28	28/29
Adopt and implement carbon emission reporting and management framework SDP 2021-30, 4.4 & 4.7 CO19/027 LGASA Climate Accelerate State / Commonwealth Policy	GMEI, MFB, MPP	Implement	\$25,000	\$10,000	\$10,300	\$10,609	\$10,927
Carbon emission reduction projects SDP 2021-30, 4.4 CO19/027	MPP	Implement	\$20,000	\$150,000	-	\$150,000	-
Corporate sustainability governance update SDP 2021-30 CO19/028	GMCC, MFB	Implement	Internal		\$5,000	Internal	\$5,305
Additional resourcing for environmental sustainability program SDP 2021-30	GMEI	Implement	-	\$50,000	\$75,000	\$100,000	\$103,000
Support community education and emission reduction initiatives SDP 2021-30	EM, CEO, GMCC, GMEI	Advocate	<i>Internal, ongoing</i>				
		Sub-TOTAL	\$45,000	\$210,000	\$90,300	\$260,609	\$119,232

2. Climate Resilience

GMEI, MCAO, MDR, MPP

STRATEGY ITEM	Team	Role	24/25	25/26	26/27	27/28	28/29
Coastal adaptation & risk management planning LGASA Climate Ready Coasts 2022 Coastal Scoping Study 2022 Town Beach Adapt. Study	MCAO, MDR	Implement	\$10,000	\$25,000	\$25,750	<i>Internal, ongoing</i>	
Climate change risk & adaptation planning LGA Climate Support Program Emergency Management Plan EP Regional Adaptation Plan	GMEI	Implement	Internal	\$10,000	\$10,300	<i>Internal, ongoing</i>	
Street tree planting & urban tree canopy mapping program LGA Climate Support Program Open Space Strategy 2021-26 Urban Design Action Plan	MPP	Implement	Internal	\$30,000	\$50,900	\$31,827	\$32,782
Bushfire Management & Treatment Plan Emergency Management Plan	MDR	Implement	\$100,000	\$100,000	\$100,000	\$50,000	\$51,500
Stormwater sea level rise adaptation planning LGA Climate Ready Coasts SMP2019	MCAO	Implement	-	\$50,000	<i>(TBC pending completion of planning)</i>		
		Sub-TOTAL	\$110,000	\$215,000	\$186,950	\$81,827	\$84,282

29/30	30/31	31/32	32/33	33/34	NOTES
\$11,255	\$11,593	\$11,941	\$12,299	\$12,668	Year 1 - GHG inventory, establish targets, reporting and action plan Year 2 - Energy efficiency upgrade strategy for council assets Year 3 - Sustainable corporate fleet strategy (eg. EV, hybrid) Year 4 - GHG inventory & reporting Review membership with appropriate industry groups and peak bodies to provide technical and strategic support.
\$200,000	\$200,000	-	-	-	Progress major facilities for energy efficiency upgrades (eg. Leisure Centre, Ravensdale, NAC, Civic Centre, Recycle Water Network, LED street lights, etc.) In line with Commonwealth Community Energy Upgrade Funding objectives, Round 2 to open January 2025.
Internal	<i>Internal, ongoing</i>				Corporate systems and policy review eg. procurement, ESD guidelines, Council waste systems, sustainable events guidelines, facilities operation, position descriptions, etc.
\$106,090	\$109,273	\$112,551	\$115,927	\$119,405	Increase staff resources in Environmental Sustainability to deliver program of work in line with adopted strategy.
<i>Internal, ongoing</i>					Lobby and provide support for community projects and initiatives such as EV infrastructure, community scale renewable energy projects, etc.
\$317,345	\$326,493	\$124,491	\$128,226	\$132,073	

29/30	30/31	31/32	32/33	33/34	NOTES
<i>Internal, ongoing</i>					Review recommendations from 2022 Coastal Scoping Study & Cell 2 Town Beach Adaptation Study. Relevant to Council asset management, as well as planning and development. First round LGA funding anticipated from January 2025 under Climate Ready Coasts program. Additional funding to be sought from Federal Disaster Resilience fund available for main body of work required for Urban Planning project.
<i>Internal, ongoing</i>					Review and implement recommendations from 2024 LGA Climate Support Program. Emergency Management Plan Action 1.3: Assess impact of climate change on Council's future emergency risk profile.
\$33,765	\$34,778	\$35,822	\$36,896	\$38,003	Year 2: commence \$30,000 p.a. towards street tree planting program Year 3: Urban tree canopy mapping project to identify key objectives. Consider opportunities for community participation
\$53,045	\$54,636	\$56,275	\$57,964	\$59,703	<i>Strategy to reassess our defensive posture with respect to bushfires and increasing risk due to climate change. SAFECOM Risk & Resilience Funding Application: \$300k over three years on a 50:50 matched funding basis.</i>
<i>(TBC pending completion of planning)</i>					<i>Strategy 4: Planning for Sea Level Rise. Project to look at adaptation measures for stormwater infrastructure due to risk of future sea level rise, as per recommendation Strategy 4 in 2019 Stormwater Management Plan.</i>
\$86,810	\$89,415	\$92,097	\$94,860	\$97,706	

3. Waste & Resources

MCAO

STRATEGY ITEM	Team	Role	24/25	25/26	26/27	27/28	28/29
Finalise Waste Management Strategy SDP 2021-2030 EP Waste & Resources Strategy	MCAO	Implement	Internal resources				
Sustainable Kerbside Collection Services: Recycling & FOGO Draft WMS / EPWRS State/Fed FOGO Strategy	MCAO	Implement	\$50,000	\$275,000	\$485,000	Internal, ongoing	
Waste and Resources Coordinator Draft WMS EP Waste & Resources Strategy	MCAO	Implement	-	\$40,000	\$41,200	\$42,436	\$43,709
CBD & Foreshore street recycling bins Draft WMS	MCAO	Implement	-	\$89,040	\$87,573	\$23,250	\$23,948
Further Initiatives as per Draft Waste Management Plan Draft WMS EP Waste & Resources Strategy	MCAO	Implement / Advocate	-	\$56,500	\$6,545	\$6,741	\$65,476
		Sub-TOTAL	\$50,000	\$460,540	\$620,318	\$72,428	\$133,133

4. Water Sensitive

MCAO, MDR, MPP

STRATEGY ITEM	Team	Role	24/25	25/26	26/27	27/28	28/29
Recycled Water Scheme review SDP 2021-30	GMEI	Implement	\$20,000	\$20,000	(TBC pending completion of review)		
Recycled Water Scheme Asset Management IAMP 2024-2033	MCAO	Implement	\$6,000	\$779,000	\$62,000	\$323,000	
Council water efficiency initiatives SDP 2021-30	MPP	Implement	Internal	Internal	\$20,000	\$20,000	Internal, ongoing
WSUD Development & Stormwater Quality Initiatives SDP 2021-30, 4.1, 4.2 SMP 2019	MCAO	Implement	Internal	(As per item listed in 5, Biodiversity)			
Gross Pollutant Trap Installation SMP 2019 10 Year Stormwater Program 2024	MCAO	Implement	-	\$60,000	-	-	\$120,000
Mallee Park Wetlands SMP 2019 10 Year Stormwater Program 2024	MCAO	Implement	-	\$30,000	\$50,000	\$120,000	\$350,000
Western Approach Detention Stage 1 SMP 2019 10 Year Stormwater Program 2024	MCAO	Implement	\$160,000	\$20,000	\$700,000	\$415,000	-
Racecourse Wetlands Project SMP 2019 10 Year Stormwater Program 2024	MCAO	Implement	-	-	-	-	-
		Sub-TOTAL	\$186,000	\$909,000	\$832,000	\$878,000	\$470,000

29/30	30/31	31/32	32/33	33/34	NOTES
					Finalise and adopt Waste Management Strategy
Internal, ongoing					Year 1: Completion of FOGO Pilot Year 2: upgrade of recycle bins & development of organics processing facility Year 3: rollout of FOGO bins and collection service
\$45,020	\$46,371	\$47,762	\$49,195	\$50,671	Allocation of funds to support additional staff resource for waste and resources strategy programs and initiatives.
\$24,666	\$25,406	\$26,169	\$26,954	\$27,762	Year 1: install 15 x recycling bins on the foreshore and Year 2: install 13 x recycling bins in the CBD Ongoing: recycling bin collection charges
\$7,152	\$7,366	\$71,547	\$7,815	\$8,050	Three yearly kerbside waste audits Data management system Community education program Fishing industry product stewardship Maintain watching brief on soft plastics recycling Construction and demolition waste recovery
\$76,839	\$79,144	\$145,478	\$83,964	\$86,483	

29/30	30/31	31/32	32/33	33/34	NOTES
(TBC pending completion of review)					Review process optimisation, future asset renewal requirements, scheme viability and expansion opportunities.
	\$58,000	\$25,000			Continue to maintain and renew assets associated with the Recycled Water Scheme. Priority and expenditure to be reviewed as part of system review.
Internal, ongoing					Continue irrigation controller upgrades, flow rate sensors, etc. Monitoring via smart meters or flow rate sensors to all facilities & irrigated reserves. Review viable Council facilities for installation of rainwater tanks.
(As per item listed in 5, Biodiversity)					Training & development, plus ongoing installation of additional rain gardens. Review water quality monitoring program with EPA & EP Landscape Board.
-	\$60,000	-	-	-	Install gross pollutant traps across selected Council stormwater outfall locations in line with Stormwater Management Plan 2019, commencing in 25/26 with Laguna Beach.
\$350,000	-	-	-	-	Development of wetlands in Mallee Park will improve stormwater quality and discharge volumes into the marine environment, in line with Stormwater Management Plan 2019. Includes significant portions of SMA funding.
-	-	-	-	-	Construction of stormwater detention infrastructure on Western Approach road to reduce localised flooding and peak stormwater discharge into marine environment. This is stage 1 of the Racecourse Wetlands project. Includes significant portions of SMA funding.
\$50,000	\$150,000	\$1,000,000	\$1,500,000	-	Construction of wetlands and storage lagoon at Port Lincoln Racecourse will reduce peak stormwater and pollutant discharge into marine environment, and retain stormwater for reuse purposes, in line with Council's 10 Year Stormwater Program 2024. Includes significant portions of SMA funding.
\$400,000	\$268,000	\$1,025,000	\$1,500,000	\$0	

5. Biodiversity

GMEI, MDR, MPP

STRATEGY ITEM	Team	Role	24/25	25/26	26/27	27/28	28/29
Biodiversity Conservation Actions Open Space Strategy 2021-26 EBS Ecology Study	GMEI MDR	Implement	Internal	\$10,000	Internal, ongoing		
Regional Advocacy & Education SDP 2021-30 EPA Aquatic Ecosystem Report	CEO, GEMI	Advocate	Internal, ongoing				
Cat Management Program 2016 Animal Management Plan	MDR	Implement	\$5,000	\$5,150	\$5,305	\$5,464	\$5,628
Murray Point Masterplanning Open Space Strategy 2021-26	MPP	Implement	\$15,000	(TBC pending completion of masterplan)			
WSUD Development & Stormwater Quality Initiatives SDP 2021-30, 4.1, 4.2 SMP 2019 EPA Aquatic Ecosystem Report	MCAO	Implement	Internal	\$10,000	\$10,300	\$10,609	\$10,927
Wetlands and Stormwater Detention Projects (Mallee Park, Western Approach, Racecourse) SMP 2019 WGA Waterproofing Port Lincoln	MCAO	Implement	(As per item listed in 4, Water Sensitive)				
		Sub-TOTAL	\$20,000	\$25,150	\$15,605	\$16,073	\$16,555

Sub-TOTAL Other Strategy	\$336,000	\$1,504,690	\$1,537,623	\$985,891	\$660,261
Sub-TOTAL New	\$75,000	\$315,000	\$207,550	\$323,045	\$162,941
TOTAL Expenditure	\$411,000	\$1,819,690	\$1,745,173	\$1,308,936	\$823,201

POSITION TITLES:

EM	Elected Members
CEO	Chief Executive Officer
GMEI	General Manager Environment & Infrastructure
GMCC	General Manager Corporate & Community
MCAO	Manager Civil Assets & Operations
MPP	Manager Places & Presentation
MDR	Manager Development & Regulatory
MFB	Manager Finance & Business

29/30	30/31	31/32	32/33	33/34	NOTES
<i>Internal, ongoing</i>					Continue to preserve high value reserves in line with EBS Ecology Study. Review recommendations and develop action plan based on Open Space Strategy 2021-6 & EBS Ecology Study 2010. Work with DEW and community groups.
<i>Internal, ongoing</i>					Seek Representation on EP Landscape Board Continue to lobby for responsible use of Jussieu BioUnit
\$5,796	\$5,970	\$6,149	\$6,334	\$6,524	<i>Ongoing cat management program as per 2016 Animal Management Plan to minimise unowned cat population.</i>
<i>(TBC pending completion of masterplan)</i>					<i>Project to enhance access and wayfinding for recreation, ecotourism and preservation of native vegetation.</i>
\$11,255	\$11,593	\$11,941	\$12,299	\$12,668	As per item listed in "Water Sensitive" section above. Improved management of stormwater flows and quality has a positive outcome on aquatic and marine ecosystem.
<i>(As per item listed in 4, Water Sensitive)</i>					<i>As per item listed in "Water Sensitive" section above. Improved management of stormwater flows and quality has positive outcome on aquatic and marine ecosystem.</i>
\$17,051	\$17,563	\$18,090	\$18,633	\$19,192	

Legend: New strategy/action plan budget item
Covered by existing/draft strategy budget item

10 YEAR TOTAL

\$535,680	\$407,750	\$1,232,903	\$1,648,261	\$152,709	\$9,001,768
\$362,365	\$367,236	\$172,253	\$177,421	\$182,744	\$2,345,556
\$898,045	\$774,987	\$1,405,156	\$1,825,682	\$335,453	\$11,347,324

REFERENCES

Climate Change projections

<https://www.environment.sa.gov.au/topics/climate-change/climate-science-knowledge-resources/latest-climate-projections-for-sa>

Shapshot Emissions Profile

<https://snapshotclimate.com.au/locality/municipality/australia/south-australia/port-lincoln/2021>

EPA Aquatic Ecosystem Report

https://www.epa.sa.gov.au/reports_water/jussieu-ecosystem-2022

City of Port Lincoln Greenhouse Gas Emissions Inventory 2022, Pangolin Associates

City of Port Lincoln Coastal Scoping Project Report 2022, Integrated Coasts

Port Lincoln City Council Vegetation & Biodiversity Study 2010, EBS Ecology

GLOSSARY OF TERMS

Circular economy	An approach that reduces material use, redesigns materials and products to be less resource intensive, and recaptures waste as a resource to manufacture new materials and products (Reference: US Environment Protection Agency)
Climate resilience	Capacity to anticipate climate risks and hazards, absorb shocks and stresses, and reshape and transform development pathways in the long term (Reference: United Nations Framework Convention on Climate Change)
Environmental sustainability	Maintaining a balanced state of environmental health through application of the principles of ecologically sustainable development, including; triple bottom line, intergenerational equity, the precautionary principle, conservation of biological diversity and integrity, and promotion of improved valuation, pricing and incentive mechanisms in decision making (Reference: <i>Environmental Protection and Biodiversity Conservation Act 1999</i>)
EPLGA	Eyre Peninsula Local Government Association
FOGO	Food organics and garden organics, typically a term used with reference to a municipal kerbside collection service
GHG Inventory	Greenhouse gas emissions inventory
LGASA	Local Government Association of South Australia
Net Zero	Reducing anthropogenic greenhouse gas emissions to as close to zero as possible, balanced by actions to remove any remaining emissions (Reference: South Australian Department of Environment and Water)
WSUD	Water sensitive urban design, an approach to urban planning and design that integrates the management of the total water cycle into the land use and development process (Reference: <i>South Australian Department of Environment and Water</i>)

For further interpretation and definitions refer to the *Environment Protection Act 1993*, *Environment Protection and Biodiversity Conservation Act 1999*, and other relevant legislation.



City of
Port Lincoln
Seafood Capital of Australia