



CITY OF PORT LINCOLN
WASTE AND RESOURCES
MANAGEMENT STRATEGY
2025-2029

CONTENTS

| | |
|---|----|
| Why a Waste and Resources Management Strategy ----- | 1 |
| Key Principles ----- | 2 |
| Background ----- | 3 |
| City of Port Lincoln's Current Waste Services ---- | 4 |
| 2022/2023 Financial Year ----- | 5 |
| Opportunities ----- | 6 |
| Action Plan ----- | 8 |
| City of Port Lincoln Waste and Resources Action Plan Implementation ----- | 12 |

We acknowledge the Barngarla People, the Traditional Owners of the land on which the City of Port Lincoln rests and their continuing connection to land, sea, culture, and community.

We pay our respects to Elders past, present, and emerging.

Adopted by Council

21 October 2024

DOC ID 47710

WHY A WASTE AND RESOURCES MANAGEMENT STRATEGY

In support of Council's sustainable environment goal to be clean, green, renewable, and resilient, the Strategic Directions Plan 2021-2030 identifies the development and implementation of a Waste Management Strategy as a key strategic action.

4.5: Develop and implement a Waste Management Strategy including community empowerment and education on resource management.

Waste services constitute approximately 16% of the City of Port Lincoln's total annual expenditure, making it one of the most significant single services we provide.

Every tonne of waste sent to landfill costs approximately \$285 and produces approximately 1.6 tonnes of CO₂ emissions, making waste a significant cost to rate payers and source of carbon emissions.

Given the significant financial and environmental costs, every tonne of waste we can divert from landfill and recover for beneficial use will result in lower carbon emissions, less waste of natural resources, and an opportunity for optimising costs spent on waste services.

KEY PRINCIPLES

Key principles underpinning the Strategy are:

- Alignment with regional and state strategies and current best practice guidelines.
- Collaboration with neighbouring Councils to implement best practice services.
- Alignment with other council strategies.

The City of Port Lincoln's Waste & Resources Management Strategy is a customised Action Plan aligned with the Eyre Peninsula Local Government Association (EPLGA) Waste and Resources Strategy and is arranged under the following five objectives:

- 1. Reduce waste generation and increase landfill diversion.**
- 2. Increase the recovery of resources.**
- 3. Deliver reliable, flexible, and cost-effective services that meet the needs of the community.**
- 4. Protect and conserve the natural environment.**
- 5. Implement governance structures that support collaboration and partnerships.**

BACKGROUND

STRATEGIC CONTEXT

South Australia's Waste Strategy 2020-2025 aims to transition from a linear and recycling economy to a circular economy, i.e., an economy that involves redesigning systems and products so they can be easily repaired, disassembled, and recycled to keep materials circulating indefinitely.

In addition, *South Australia's Food Waste Strategy 2020-2025 'Valuing Our Food Waste'* aims to reduce and divert household and business food waste away from landfill. The *Single-use and Other Plastic Products Bill 2020* establishes a staged ban on the sale, supply, and distribution of some single-use plastic products, and includes a framework for adding other products in the future.

The Commonwealth Government's Product Stewardship Act 2011 provides the framework to manage the environmental, health, safety, and disposal impacts of products like tyres, batteries, and e-waste effectively. Product Stewardship is an approach to managing the impacts of different products and materials. It acknowledges that those products or materials are managed in a way that reduces their impact, throughout their life cycle, on the environment, and on human health and safety. Under the *Product Stewardship Act 2011 (Commonwealth)* this can be voluntary, co-regulatory or mandatory.



CITY OF PORT LINCOLN'S CURRENT WASTE SERVICES

Council is responsible for municipal waste management, including kerbside collection, street litter bins, and Resource Recovery Centre operations. Waste management services are contracted to Veolia for a ten-year term commencing in 2018 with a five-year right of renewal.

In FY 2022/2023, the waste management contract cost \$3,126,245, which was offset by service charges of \$2,369,428 (waste collection charge) and \$446,666 (recycling collection charge).

Services charges are applied in line with Section 155 (2(a)) of the Local Government Act. Waste and Recycling charges are set annually during the budget process.

The City of Port Lincoln currently provides a weekly domestic kerbside waste collection service and a fortnightly recyclables collection service to around 8,300 residences.

In addition to waste collected from kerbside and street litter bins the Resource Recovery Centre receives almost 7,000 tonnes of other waste, including cardboard, commercial and green waste, timber pallets, rope and net, as well as asbestos and contaminated fill.

2023/2024 FINANCIAL YEAR

| Total waste and recyclables kerbside collection (including street litter bins) and transfer station | No. of tonnes |
|---|---------------|
| Total waste | 15,107 |
| Green waste | 1,209 |
| Recycling | 1,616 |
| Landfill total | 12,281 |
| Diversion total (recycling + green waste) | 2,826 |
| Diversion rate | 19% |

| Kerbside Collection Only | No. of tonnes |
|--------------------------|---------------|
| Total | 4,984.35 |
| Landfill | 4,050.65 |
| Recycling | 933.70 |
| Diversion rate | 19% |



OPPORTUNITIES

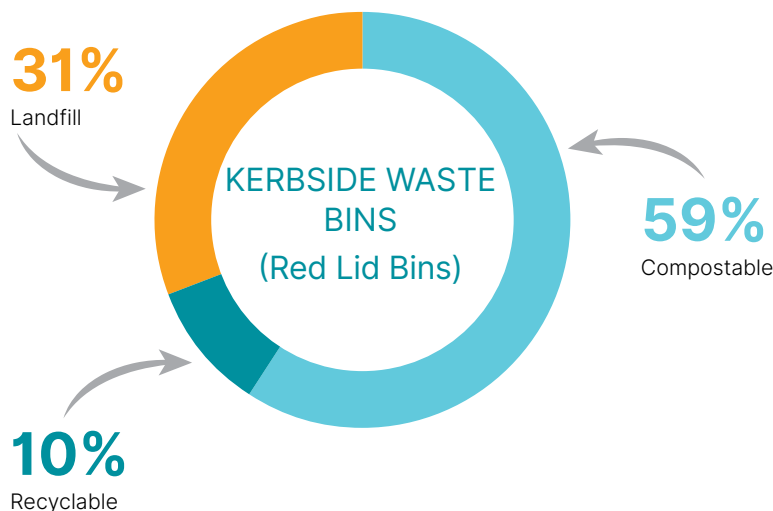
IMPROVE KERBSIDE COLLECTION PERFORMANCE

Implement FOGO (Food Organics and Garden Organics) collection to reduce the amount of compostable and recyclable material in the red bin.

Based on a KESAB audit of City of Port Lincoln kerbside waste bins in 2017, 59%^[1] of the waste was compostable organics, and 10% recyclables. This figure was verified again by a 2024 KESAB audit (FOGO pilot area only – 50 bin sample from 400 participants).

Our current kerbside diversion rate, that is the percentage of all kerbside waste materials captured and diverted from landfill in Port Lincoln is only 19%.

This is compared with diversion rates of 51.5%, for Adelaide metropolitan councils where residents are provided with bins for waste, recycling and food organics and green organic (FOGO) bins.



The City of Port Lincoln does not have a green organics kerbside collection service. Many councils now also include food waste, green waste and other compostables in a FOGO collection.

Across SA^[2] 83% of organics material is diverted from landfill. The use of recycled organic products such as mulch and compost contribute to improved soil health and improves productivity with a flow on impact contributing a further \$190 million Gross State Product to SA's economy.

1 KESAB environmental solutions Kerbside Waste Audit, City of Port Lincoln, September 2017
2 SA Organics Sector Analysis Summary Green Industries SA

REDUCE THE AMOUNT OF CONTAMINATION IN THE YELLOW BIN

Of all the tonnes of recycling collected from kerbside recycling bins (yellow bins), approximately 15% is contaminated, generally with organics or compostable material, and landfill waste.^[3]

On average, only 65% of residences present their recycling bin for collection.



The diversion of compostable and recyclable material from landfill will reduce our carbon emissions and deliver optimal savings through reduced costs.

3 Government of South Australia Circular Economy Resource Recovery Report 2021-22

ACTION PLAN

This action plan aims to reduce waste generation, promote recycling and reuse, minimise landfill disposal, and enhance overall environmental and community wellbeing. Actions included may support more than one objective.

The key objectives of the Waste and Resources Strategy are:

1. REDUCE WASTE GENERATION AND INCREASE LANDFILL DIVERSION

Actions under this objective aim to reduce how much waste is produced per capita and increase diversion from landfill i.e. reduce the amount of waste being sent to landfill. Implementation of a FOGO collection in Port Lincoln is an opportunity to considerably increase diversion from landfill.

$$\text{Diversion rate} = \frac{\text{weight of organics recycling material in organics and recycling bins (kg/wk)}}{\text{total weight of all material in all 3 bins (kg/wk)}} \times 100$$

Priority Actions for City of Port Lincoln

- Complete and evaluate the 12-month Kerbside Food and Garden Organics (FOGO) Pilot to 400 households in 2024/25. Indicators for the FOGO pilot evaluation will include contamination and presentation rates, plus customer satisfaction.

- Determine roll out of the three bin system based on evaluation findings of the FOGO pilot.
- Provide information to residents about “Which Bin” on waste sorting, disposal and environmental impact.
- Establish internal operation waste management procedure for Council operations including Sustainable Event Guidelines.
- Undertake an audit of the three kerbside bins (waste, recycling and FOGO) every three years and track the reduction in waste to landfill and diversion rate.
- Implement procurement practices that avoid and minimise waste including in design (e.g. material with recycled content, materials with low waste rates) and purchasing (e.g. materials with minimal packaging).

Targets

- Reduce amount of waste being transported to landfill by 2% per year.
- Implement the Sustainable Kerbside Service (3 bin system including FOGO) by 2027.

2. INCREASE THE RECOVERY OF RESOURCES

Actions under this objective aim to improve the recovery of resources including organics, plastics, glass, paper, cardboard, and e-waste as well as demolition and construction waste.

Priority Actions for City of Port Lincoln

- Develop a business case for FOGO roll-out including composting facility.
- Undertake a trial of recycling bins along the foreshore.
- Implement a staged roll-out of recycling bins in selected locations including CBD (Liverpool Street and Tasman Terrace) parks and playgrounds.
- Investigate opportunities to divert commercial and industrial waste from landfill through reuse and recycling including demolition and construction derived waste materials.

- Keep a watching brief on soft plastics recycling initiatives and explore opportunities for processing and reuse.
- Update Council procurement policy and practices to provide incentives and targets in RFX documentation to encourage use of recycled products, as applicable.
- Partner with schools and community groups to deliver education programs and information about waste sorting, disposal and environmental impact.

Targets

- Achieve recovery rate of kerbside FOGO of 50% within 3 years of commencement.

3. DELIVER RELIABLE, FLEXIBLE, AND COST-EFFECTIVE SERVICES

Actions under this objective aim to ensure the efficiency and effectiveness of waste services and decrease the amount of waste being transported to landfill to reduce costs and carbon emissions.

Priority Actions for City of Port Lincoln

- Investigate hard waste and illegal dumping issues including unsanctioned 'donations' at charity shops.
- Identify and assess potential solutions, including hard rubbish collection, vouchers for free hard waste and green waste drop off and other community initiatives.
- Improve data collection about the composition of waste and streamline data management.

- Review Resource Recovery Centre operations to improve service delivery efficiency and better measure impact of other actions.
- Ensure adequate investment and resourcing to deliver efficient waste management services and implement priority actions in the Waste and Resource Recovery Strategy.

Targets

- Waste Management and Resource Officer appointed by 2025.

4. PROTECT AND CONSERVE THE NATURAL ENVIRONMENT

Actions under this objective aim to support the farming, fisheries, and aquaculture sectors to improve end-of-life recovery of rope, nets and plastics for recycling, diversion of organics for composting and support development of product stewardship.

Priority Actions for City of Port Lincoln

- Participate in EPLGA standing committee to develop best practice guides, targeted education and networking programs.
- Work with fishing and aquaculture industry associations to improve recovery and reuse of waste streams and support initiatives at the Resource Recovery Centre, where feasible.
- Improve (disaggregated) data collection about rope and net disposal.
- Advocate to other levels of government in relation to waste management and resource recovery including mandatory product stewardship programs as appropriate.

5. IMPLEMENT GOVERNANCE STRUCTURES

Actions under this objective aim to support councils across the Eyre Peninsula to work together to deliver the Eyre Peninsula Waste and Resources Strategy and implement regional procurement and service delivery opportunities.

Priority Actions for City of Port Lincoln

- Provide City of Port Lincoln representation on the Eyre Peninsula Waste Committee.
- Participate in a shared online platform for reporting data management.

Targets

- 6 monthly reports to Council from EP Waste Committee representative.

MONITORING AND REPORTING

To support the implementation of the Waste and Resource Management Strategy – Action Plan, Council will monitor and report on progress against targets.

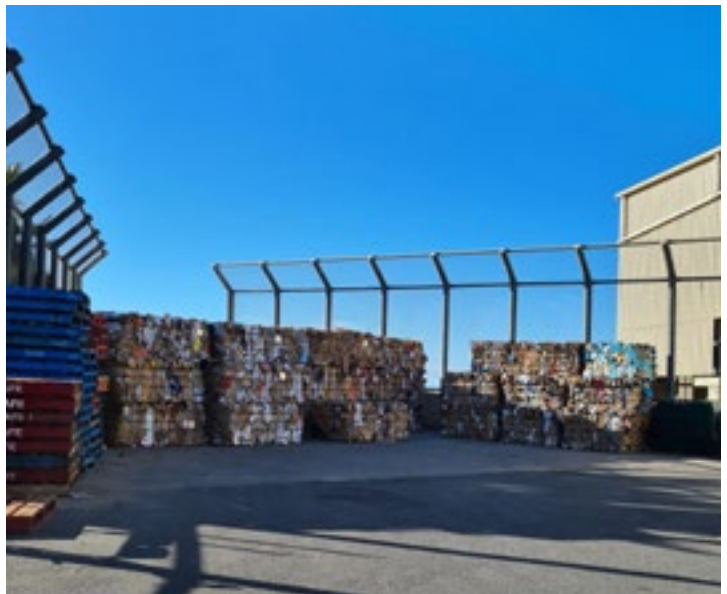
We will communicate achievements, challenges, and upcoming initiatives both internally and to the wider community.

Target

- Council will report to the community at least annually about progress against Waste and Resources Management Strategy and Action Plans.

RESOURCING

Ensure adequate investment and resourcing to deliver efficient waste management services.



CITY OF PORT LINCOLN WASTE AND RESOURCES ACTION PLAN IMPLEMENTATION

Objective 1: Reduce waste generation and increase landfill diversion

| Priority Action | Team | Role | 2024/25 | 2025/26 | 2026/27 | 2027/28 | 2028/29 | Notes |
|--|-------------------|-----------|--------------------|-----------|-----------|-------------------|----------|-------|
| Sustainable Kerbside Services including FOGO pilot Information to residents about "Which Bin" | MCAO ⁴ | Implement | \$50,000 | \$275,500 | \$485,000 | Internal resource | | |
| Engage Waste and Resources Officer | MCAO | Implement | | \$40,000 | \$41,200 | \$42,436 | \$43,709 | |
| Internal waste management procedure for Council operations, including sustainable event guidelines | MCAO | Implement | Internal resources | | | | | |
| Audit kerbside bins (waste, recycling & FOGO) every three years. | MCAO | Implement | | \$30,000 | | | \$32,782 | |

Objective 2: Increase the recovery of resources

| Priority Action | Team | Role | 2024/25 | 2025/26 | 2026/27 | 2027/28 | 2028/29 | Notes |
|---|-------------------|-------------|--------------------|--------------------|--------------------|--------------------|--------------------|--|
| Business case for FOGO roll out | MCAO | Implement | Internal resources | | | | | |
| Partnerships to deliver educational programs and information | MCAO | Partner | | | \$2,000 | \$2,060 | \$2,122 | |
| Undertake a trial of recycling bins along the foreshore | MCAO | Implement | | \$29,680 | | | | |
| Staged roll-out of recycling bins in public spaces | MCAO | Implement | | | \$90,740 | \$23,250 | \$23,948 | Years 27/28 onward assumes collection only |
| Diversion opportunities for commercial and industrial waste including markets | MCAO | Implement | | \$25,000 | | | \$25,750 | Allowance for crushing etc. |
| Keep a watching brief on soft plastics recycling initiatives | MCAO | Investigate | | Internal resources | Internal resources | Internal resources | Internal resources | |
| Provide incentives and targets in RFX documentation to encourage use of recycled products | GMCC ⁵ | Implement | | | | Internal resources | | |

⁴ MCAO (Manager Civil Assets and Operations)

⁵ GMCC (General Manager Community & Corporate)

Objective 3: Deliver reliable, flexible, and cost-effective services that meet the needs of the community

| Priority Action | Team | Role | 2024/25 | 2025/26 | 2026/27 | 2027/28 | 2028/29 | Notes |
|---|------|-------------|--------------------|--------------------|--------------------|---------|---------|---|
| Investigate illegal dumping issues | MCAO | Investigate | Internal resources | | | | | In conjunction with Community Safety Team |
| Assess potential solutions to illegal dumping | MCAO | Evaluate | | Internal resources | | | | |
| Implement approved strategies to reduce illegal dumping | MCAO | Implement | | | Internal resources | | | |
| Streamline data management to improve service delivery efficiency | MCAO | Implement | | \$1,500 | \$1,545 | \$1,591 | \$1,639 | |

Objective 4: Protect and conserve the natural environment

| Priority Action | Team | Role | 2024/25 | 2025/26 | 2026/27 | 2027/28 | 2028/29 | Notes |
|--|------|-------------|--------------------|--------------------|--------------------|--------------------|--------------------|--|
| Participate in EPLGA standing committee | MCAO | Participant | Internal resources | Internal resources | Internal resources | Internal resources | Internal resources | |
| Work with fishing and aquaculture industry associations to improve recovery and reuse of waste streams and support initiatives at the Resource Recovery Centre, where feasible | MCAO | Participant | | | \$1,500 | \$1,545 | \$1,591 | In partnership with Eyre Peninsula LGA |
| Advocate to other levels of government in relation to waste management and resource recovery including mandatory product stewardship programs as appropriate | CEO | Advocate | Internal resources | Internal resources | Internal resources | Internal resources | Internal resources | In partnership with Eyre Peninsula LGA |

Objective 5: Implement Governance structures that support collaboration and partnerships

| Priority Action | Team | Role | 2024/25 | 2025/26 | 2026/27 | 2027/28 | 2028/29 | Notes |
|---|-------------------|-------------|--------------------|--------------------|--------------------|--------------------|--------------------|-------|
| Provide COPL representation on the Eyre Peninsula Waste Committee | GMEI ⁶ | Participant | Internal resources | Internal resources | Internal resources | Internal resources | Internal resources | |
| Participate in shared online platform for reporting and data management | MCAO | Participant | | Internal resources | \$1,500 | \$1,545 | \$1,592 | |

6 GMEI (General Manager Environment & Infrastructure)

