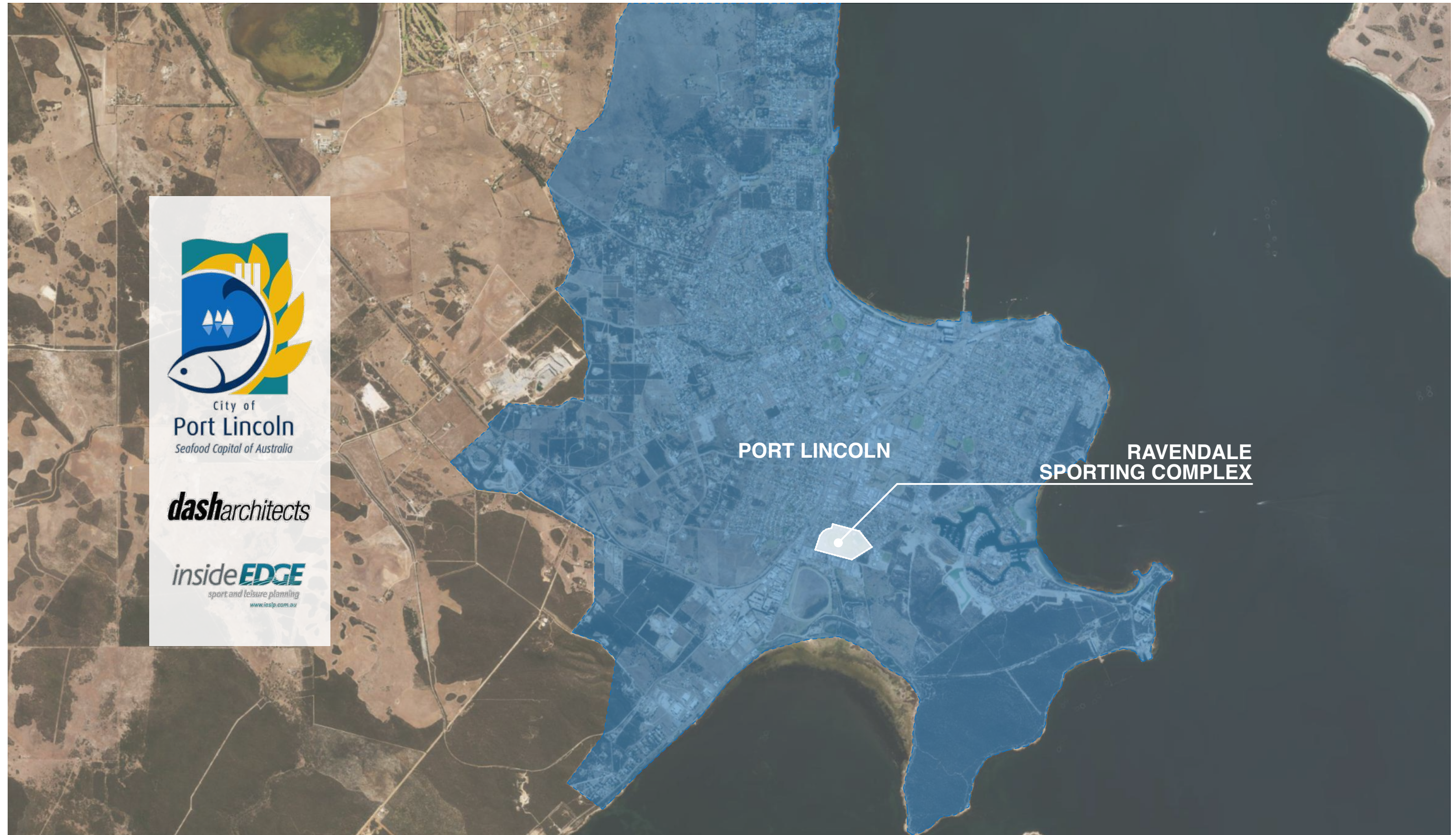


# RAVENDALE SPORTING COMPLEX

## PORT LINCOLN SPORTS PRECINCTS MASTER PLAN

GUIDING PRINCIPLES FOR SPORTING ASSETS





# GUIDING PRINCIPLES



## CURRENT MASTER PLAN PROCESS

- Prioritise assets and improvement needs for grouping organisations.
- Find synergies to co-locate organisations and maximise the use of existing assets.
- Prioritise facility improvement to those associations experiencing growth.
- Create high quality, fit for purpose, active recreation and sporting infrastructure.

## OPEN SPACE STRATEGY 2021-2026

- Tailor infrastructure and maintenance of sporting facilities in public open space to the significance / popularity of use of the asset.
- Share sporting facilities as much as possible between different activities / users to maximise return on infrastructure investments.

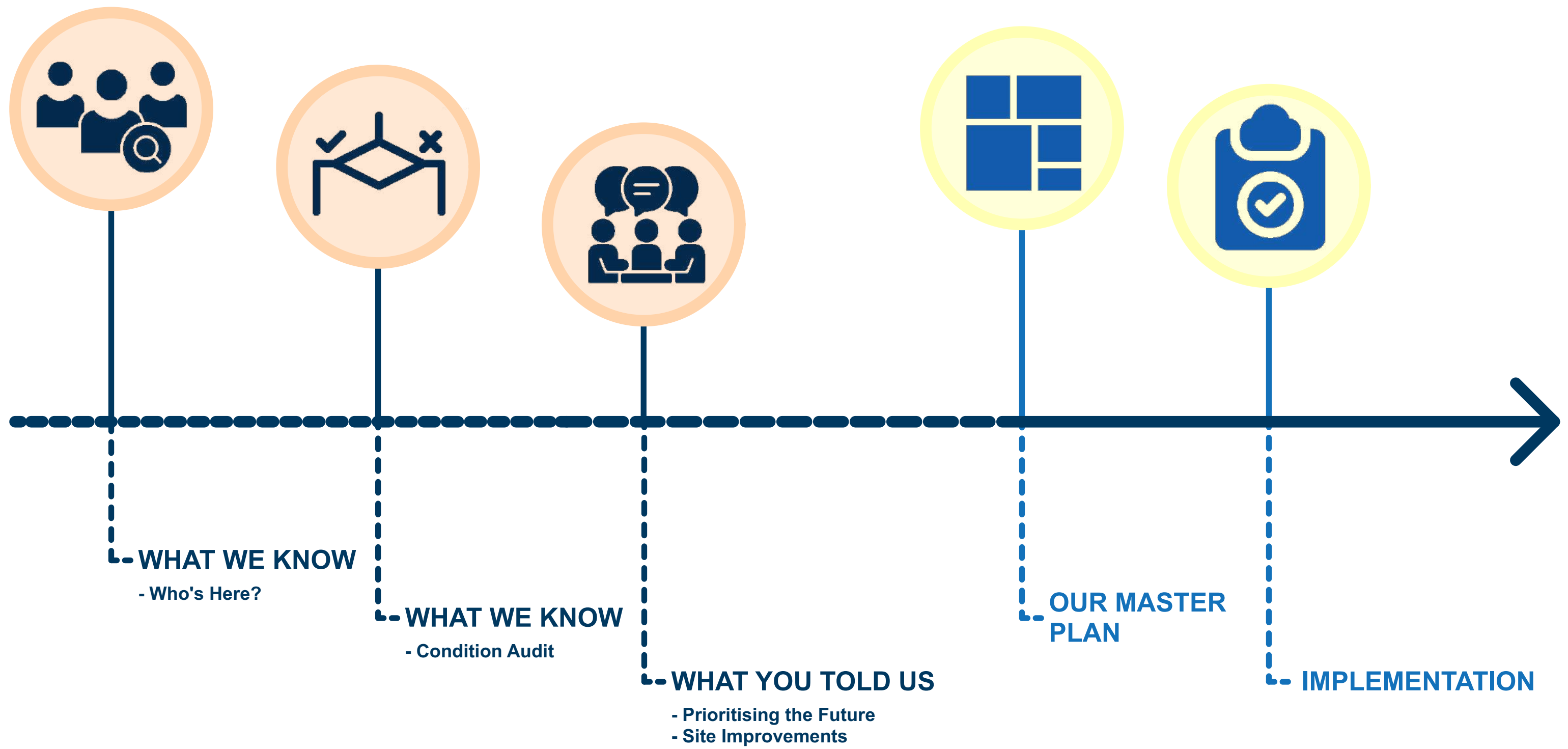
## SPORT & RECREATION STRATEGY 2023-2027

- Prioritise assets and improvement needs for grouping organisations.
- Find synergies to co-locate organisations and maximise the use of existing assets.
- Prioritise facility improvement to those associations experiencing growth.
- Create high quality, fit for purpose, active recreation and sporting infrastructure.



# PROCESS

HOW WILL WE GET THERE?





# WHAT WE KNOW

## WHO's HERE?



### 1. BEDFORD GROUP

### 2. PORT LINCOLN TABLE TENNIS ASSOCIATION

- 100 Members, modest fee base and fundraising
- Amateur club

### 3. LOWER EYRE BASEBALL LEAGUE

- Home to 3 clubs

### 4. PORT LINCOLN LITTLE ATHLETICS CLUB

- External facilities only
- Small storage shed

### 5. PORT LINCOLN GYMNASTICS CLUB

- 400 members, 4 full time coaches

### 6. PORT LINCOLN HOCKEY ASSOCIATION

- 4 teams & approx. 325 members
- Association competition and training pitches including 1x artificial turf pitch - Leased
- Storage shedding for equipment - Leased
- 4x change rooms and first aid room - Licenced
- Canteen and day - Licenced

### 7. TASMAN IMPERIAL SPORTING CLUB

- Home to Tasman Football Club
- Oval A - home ground and training oval
- home clubrooms in upstairs function rooms of Ravendale Complex - Licenced
- Home and away change rooms downstairs of Ravendale Complex - Licenced

### 7A. WAYBACK FOOTBALL CLUB

- Oval B - Training Venue for Wayback Football Club (clubrooms located at 7A.)

### 8. PORT LINCOLN NETBALL ASSOCIATION

- Home to 6 clubs
- 950 Members
- Association competition and training courts
- Admin, small clubroom, canteen and amenities
- netball courts

### 9. TASMAN CRICKET CLUB

- Oval B home oval
- Cricket nets and storarge shed

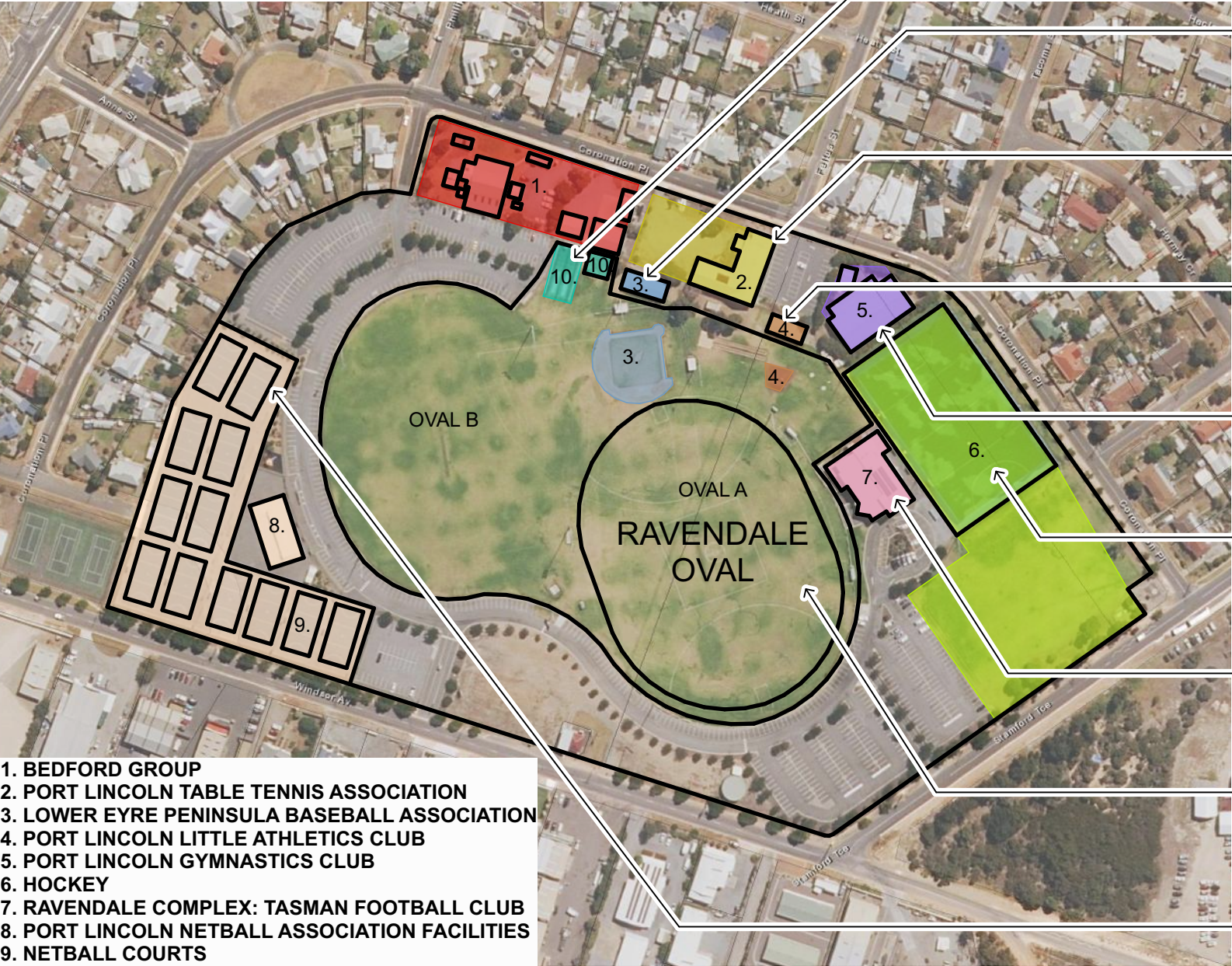
### 10. OVAL USERS

- Ovals used for Port Lincoln Football League and Port Lincoln Cricket Association, School Sports Days use of ovals and facilities etc.



# WHAT WE KNOW

## CONDITION AUDIT

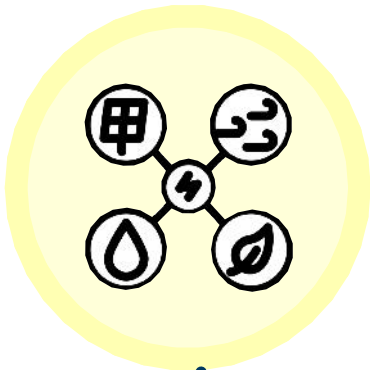


<u>Tasman Cricket Club</u> Good condition shed clubhouse and cricket nets under refurbishment.
<u>Lower Eyre Peninsula Baseball Association</u> Contemporary structure, early life, modest facility, good kitchen/bar facility and toilets.
<u>Port Lincoln Table Tennis Association</u> Ageing facility, modest toilet + kitchen facilities, later life.
<u>Port Lincoln Little Athletics Club</u> Storage shedding in good condition, permanent field sport items such as long jump in moderate condition
<u>Port Lincoln Gymnastics Club</u> In good condition, modest facility with amenities and office.
<u>Artificial Hockey Pitch</u> Artificial hockey pitches will require replacement and irrigation reaching end of life. Hockey scoreboard nearing end of life.
<u>Ravendale Complex</u> Shared changing rooms - to be modified. Existing facility complying
<u>Oval Playing Surfaces</u> Possible oval playing surfaces improvement, lighting is old technology.
<u>Port Lincoln Netball Association</u> Existing facility in good condition. Courts recently resurfaced. No gathering area, canteen in good condition. Change/amenities are not suitable for mixed age + gender / kids etc.



# WHAT YOU TOLD US

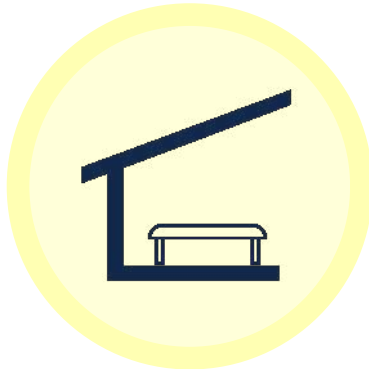
## PRIORITISING THE FUTURE & SITE IMPROVEMENTS



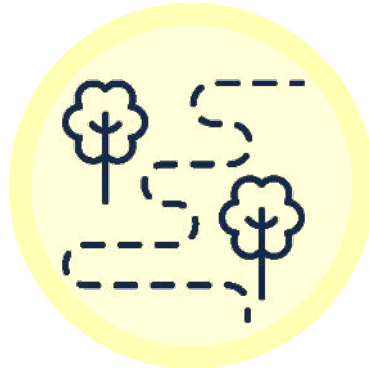
Solar Power & Water sensitive design for all new structures



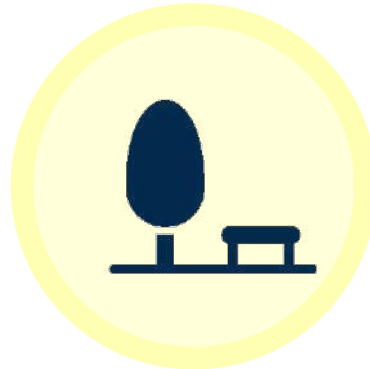
Reconfigure car parking



New shelter, new casual seating



New paths for site linkage & tree plantings for shade



New green space to Netball/Oval "B" to encourage family use

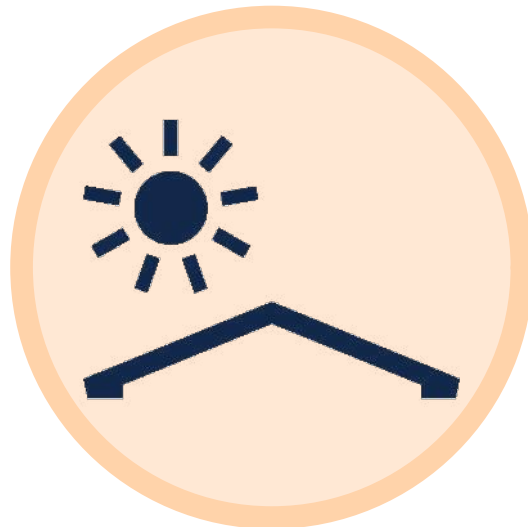


Future opportunity for hockey pitch to become soccer.

- Relocate Soccer Association to Ravendale Sporting Complex Precinct
- Satellite facilities at Kirton Point Sporting Precinct



Gymnasium upgrade/expansion to existing facilities. Co-location and inclusion of venue partners



Covering of netball courts. Greater use of Oval "B" by football teams with long term co-location with netball association

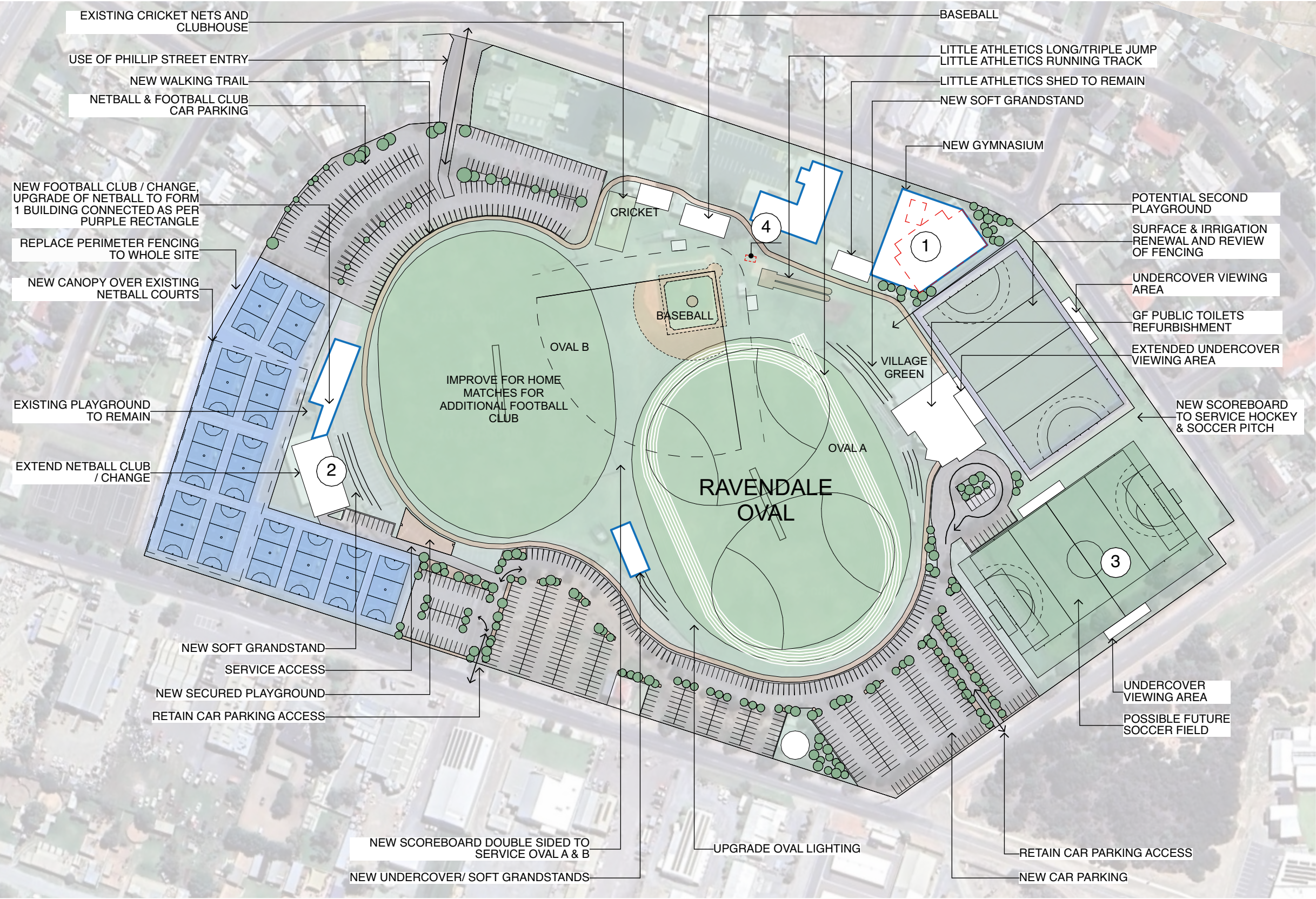


Decommission freestanding council toilets in view of use of Ravendale Building Facilities. Facilities require future refurbishment.



# OUR MASTER PLAN

## PRIORITISING THE FUTURE



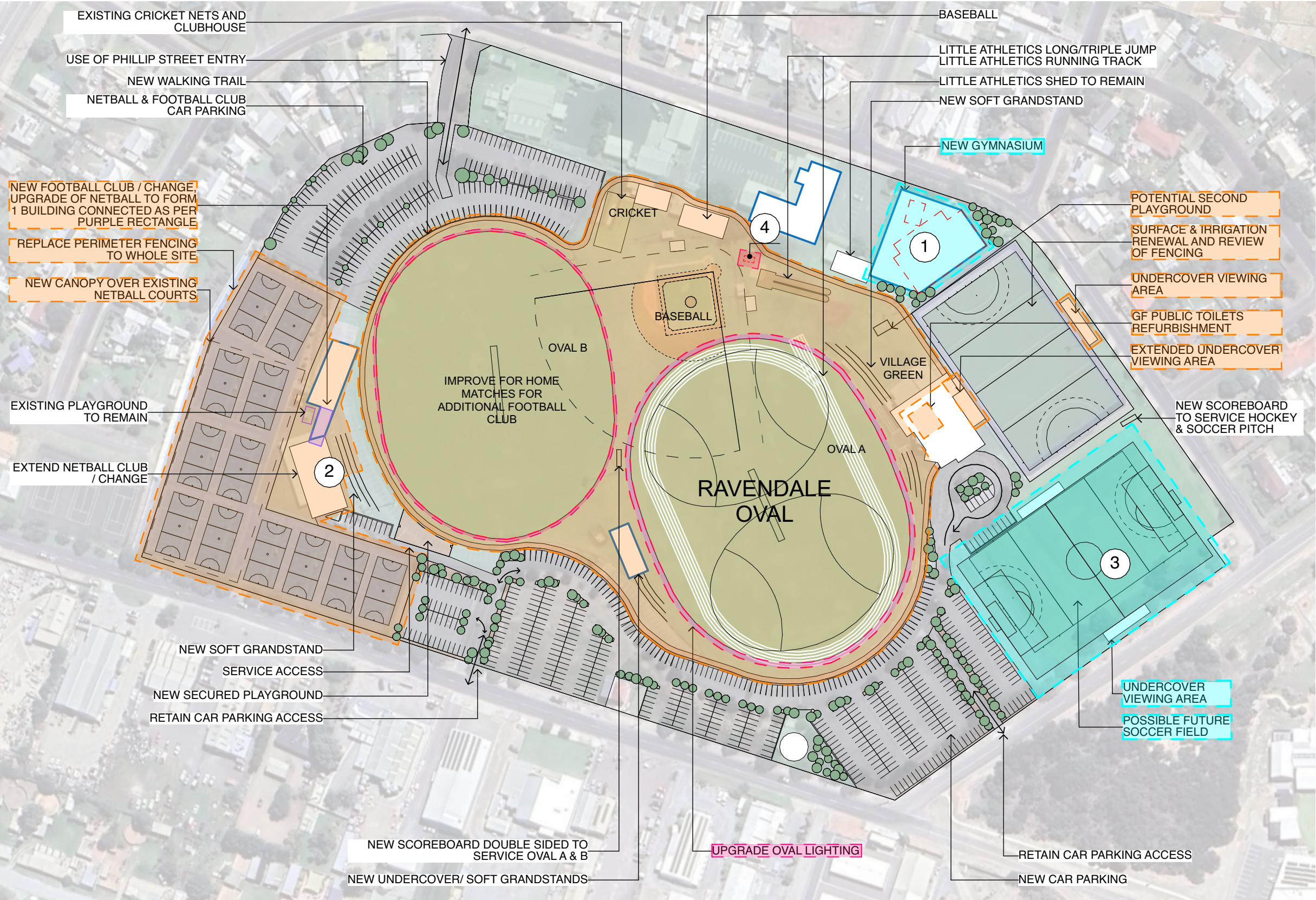
- 1 **Gymnasium upgrade / expansion with co-location of venue partners.**
- 2 **Netball courts shelter. Co-location of football / netball facilities.**
- 3 **Future opportunity for hockey pitch to become soccer.**
- 4 **Decommission freestanding council toilets.**

**SITE PLAN**  
Scale 1:2000



# IMPLEMENTATION PLAN

## PRIORITISING THE FUTURE



- 1 **Gymnasium upgrade / expansion with co-location of venue partners.**
- 2 **Netball courts shelter. Co-location of football / netball facilities.**
- 3 **Future opportunity for hockey pitch to become soccer.**
- 4 **Decommission freestanding council toilets.**

### PRIORITISING THE FUTURE

- Short Term**
  - Lighting Upgrade
  - Decommission existing toilet facilities
- Medium Term**
  - Change Amenities / Canteen
  - Public Toilet Refurbishment
  - New Canopies to Courts
  - Replacement of site perimeter fencing
- Longer Term**
  - Player Support / Grandstand & Carpark
  - Artificial Pitch
  - New Undercover Viewing Areas
  - Future soccer field
  - New Gymnasium

**SITE PLAN**  
Scale 1:2000